

The Rock Ridge Ranch

BY LIVING STONE CONSTRUCTION



The Rock Ridge Ranch is from our popular Contemporary line of plans. This home is perfect for families of all ages because it has main level living through its Universal Design, and its low maintenance finishes, which offers flexibility for all ages and seasons of life. It features approximately 2,462 hsf, 3 bedrooms, 3 baths, a unique art gallery entry, and an open layout to maximize expansive views with a large deck, all on one level. This plan works well with most mountain lots and is perfectly designed for those sloping lots with a knoll. It can be built over a lower level which will allow overflow space below, including additional bedrooms, recreational space, outdoor living and patio space if desired. This home has dramatic angular vaulted ceilings, oversized windows, and large full-size slider doors that create a wall of glass to open out the back. Like all Living Stone homes, this model is certified Energy Star and NC Greenbuilt, has a passive solar design, and smart floor plan.

Choose from one of Living Stone's stock plans and let us customize them for you at a fraction of an architect's costs.



Specifications

- 2,462 heated square foot home, on main level
- 3 bedrooms, 3 baths
- Energy Star Rated Home, Utility Discounts Eligible
- NC Greenbuilt, Superior Indoor Air Quality (IAQ) and optional solar
- Passive Solar Design
- Attached 2 Car Garage on Main Level
- Unique Art Gallery Entry
- Large Deck off the Great Room
- Master Suite features Home Office, large walk-in closet, and soaking tub
- Dramatic Stone Fireplace with Built-ins
- High Efficiency Heat Pump, or Dual Fuel Furnace (optional geothermal)
- Heat Pump Water Heater

Exterior Features

- Main level, zero clearance entry
- Low Maintenance finishes such as Natural Stone and Stucco
- Hardi-Panel and/or Cedar Siding
- Windsor Aluminum Clad Windows
- Standing Seam Metal Roof
- Covered Entryway, Heated Entry Gallery, and large deck
- Oversized Windows and Doors
- Sleek Cable Railing

Interior Features

- 9' ceilings (or greater) with unlimited vaulting potential
- Large open Kitchen with oversized island and seating
- Open Dining, Great Room, and fireplace entertaining
- Universal Design for Aging-In-Place
- Granite countertops
- Frigidaire Stainless Appliances
- Large master suite to include Home Office and soaking tub
- Oversized Walk-in Closet
- Large Laundry Room with cabinetry
- 3" oak hardwood flooring, tile, and stone floors throughout
- Kohler plumbing fixtures
- Foam roof insulation

FINISHES FULLY CUSTOMIZABLE



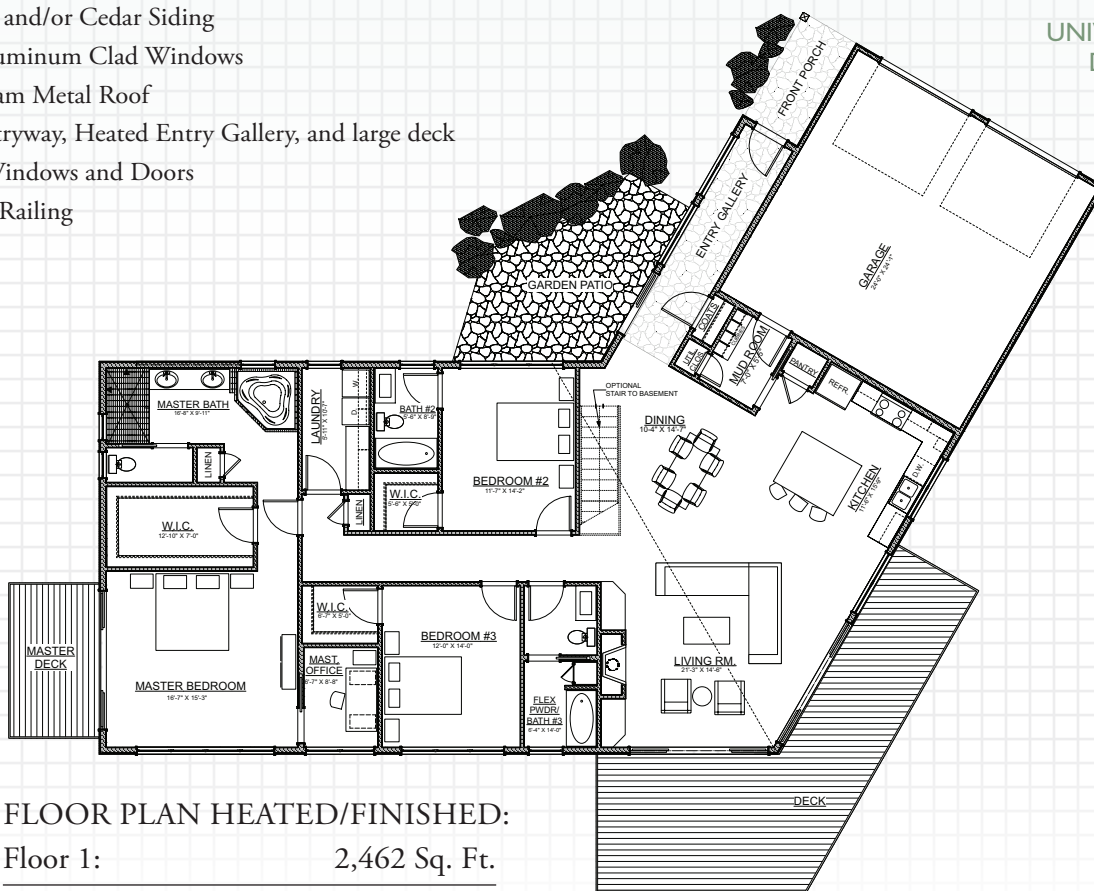
GREEN AND ENERGY EFFICIENT



LOW MAINTENANCE



UNIVERSAL DESIGN



FLOOR PLAN HEATED/FINISHED:

Floor 1: 2,462 Sq. Ft.

Total Finished: 2,462 Sq. Ft.