

The Rocky Ridge

BY LIVING STONE CONSTRUCTION



The Rocky Ridge is from our popular Contemporary line of plans. This home is perfect for families of all ages because it has main level living through its Universal Design, low maintenance finishes, and offers flexibility for all ages and seasons of life. It features approximately 2,746 heated square feet, 3 bedrooms, 2.5 baths, a unique art gallery entry, and an open layout to maximize expansive views with a large, wrap-around deck, all on one level. This plan works well with most mountain lots and is perfectly designed for those sloping lots with a knoll. It can be built over a lower level which will allow overflow space below, including additional bedrooms, recreational space, outdoor living and patio space if desired. This home has dramatic angular vaulted ceilings, oversized windows, and large full-size slider doors that create a wall of glass to open out the back. Like all Living Stone homes, this model is certified Energy Star and NC Greenbuilt, has a passive solar design, and smart floor plan.

Choose from one of Living Stone's stock plans and let us customize them for you at a fraction of an architect's costs.



Specifications

- Universal Design for all seasons of life
- 2,746 heated square foot home, on main level
- 3 bedrooms, 2 1/2 baths
- Energy Star Rated Home, Utility Discounts Eligible
- NC Greenbuilt, Superior IAQ (*optional solar*)
- Butterfly roof
- Passive Solar Design
- Attached 2 Car Garage on Main Level
- Unique Art Gallery Entry
- Wrap-around Deck
- Master Suite Home Office and Contemporary Wet Room
- Large Walk-in closet
- Dramatic Stone Fireplace with Built-ins
- High Efficiency Heat Pump, or Dual Fuel Furnace (*optional geothermal*)
- Heat Pump Water Heater

Exterior Features

- Exterior Features and Finishes:
- Main level, zero clearance entry
- Low Maintenance finishes such as Natural Stone and Stucco
- Hardi-Panel and/or Cedar Siding
- Windsor Aluminum Clad Windows
- Standing Seam Metal Roof
- Covered Entryway, Heated Entry Gallery, and Expansive deck
- Oversized Windows and Doors
- Sleek Cable Railing

Interior Features

- 9' ceilings (or greater) with unlimited angular vaulting potential
- Large open Kitchen with oversized island and seating
- Open Dining, Great Room, and fireplace for entertaining
- Universal Design for Aging-In-Place
- Granite countertops
- Frigidaire Stainless Appliances
- Large master suite to include Home Office and Wet Room
- Oversized Walk-in Closet
- Large Laundry Room with cabinetry
- 3" oak hardwood flooring, tile, and stone floors throughout
- Kohler plumbing fixtures
- Foam roof insulation

FINISHES FULLY CUSTOMIZABLE



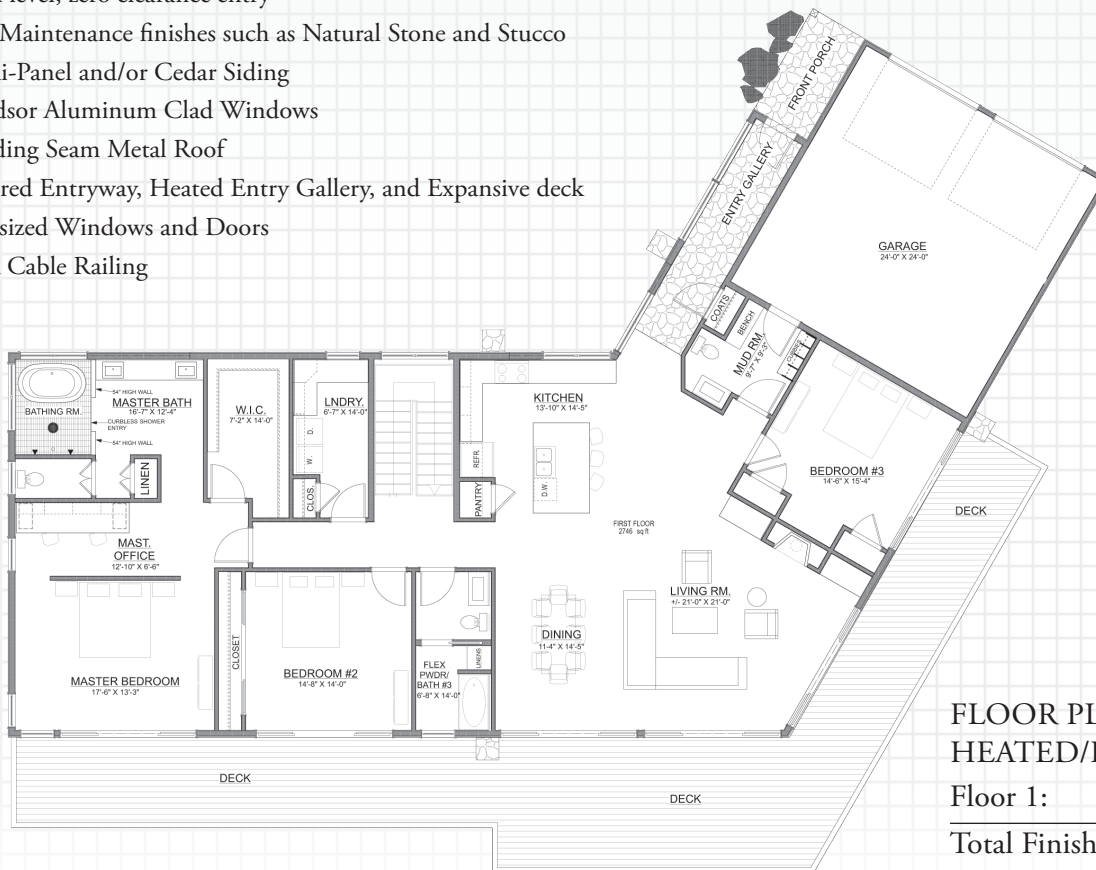
GREEN AND ENERGY EFFICIENT



LOW MAINTENANCE



UNIVERSAL DESIGN



FLOOR PLAN
HEATED/FINISHED:

Floor 1: 2,746 Sq. Ft.

Total Finished: 2,746 Sq. Ft.