

The Alexis

BY LIVING STONE CONSTRUCTION



The Alexis is an alternate to our popular Alexandra model that keeps the same main floor plan and finishes, it simply eliminates the upstairs bonus room. It also, is a universally designed home that not only boasts a quaint craftsman architectural feel, but also incredibly energy efficient construction. This floor plan works well for families of all size and ages. Since it has three bedrooms with two full baths on the main level, it works great for families with younger children, but since you can trade the third bedroom for a formal dining room, it works well for the downsizing couple as well. This 3 bedroom/2 bath house boasts a spacious 1896 heated square feet. The foundation can be placed over a crawl, unfinished basement, or finished lower level depending on your needs and desired budget.

Choose from one of Living Stone's stock plans and let us customize them for you at a fraction of an architect's costs.



Specifications

- Craftsman Home Built by Living Stone Construction, Inc.
- 1896 heated square foot home in a gated community
- 3 bedroom, 2 full bath
- Energy Star Rated Home, Utility discounts - eligible
- Attached 2 Car Garage with area for workshop
- Natural gas and all under ground utilities
- Master suite access to deck
- High efficiency Heat pump
- Heat Pump water heater
- Gas direct-vent fireplace

Exterior Features

- Natural stone veneer, columns and flagstone porch
- Jeld-Wen Premium Vinyl windows with SDLs, Low-E glass
- Hardi-plank Siding, cedar brackets
- Low maintenance exterior finishes
- Lifetime Architectural shingles and metal roof accents
- Large covered front porch and ample back deck
- Solid wood stained front door
- Tyvek house wrap and moisture barrier
- Window wrap on all windows
- Custom milled porch and deck railings

Interior Features

- 9 foot ceilings throughout main level
- Open foyer with transom windows
- Vaulted ceilings in great room and master suite (option)
- Large open kitchen with bar and dining area
- Universal design, ADA compliant main level living
- Granite countertops
- Kenmore or GE stainless steel appliances
- Large walk-in master closet (california style) with direct access to,
- Convenient laundry with sink
- 2” Oak Hardwood flooring and slate tile floors throughout main level
- Kohler Plumbing Fixtures
- Large attic rooms for climatized storage with foam insulation

FINISHES FULLY CUSTOMIZABLE



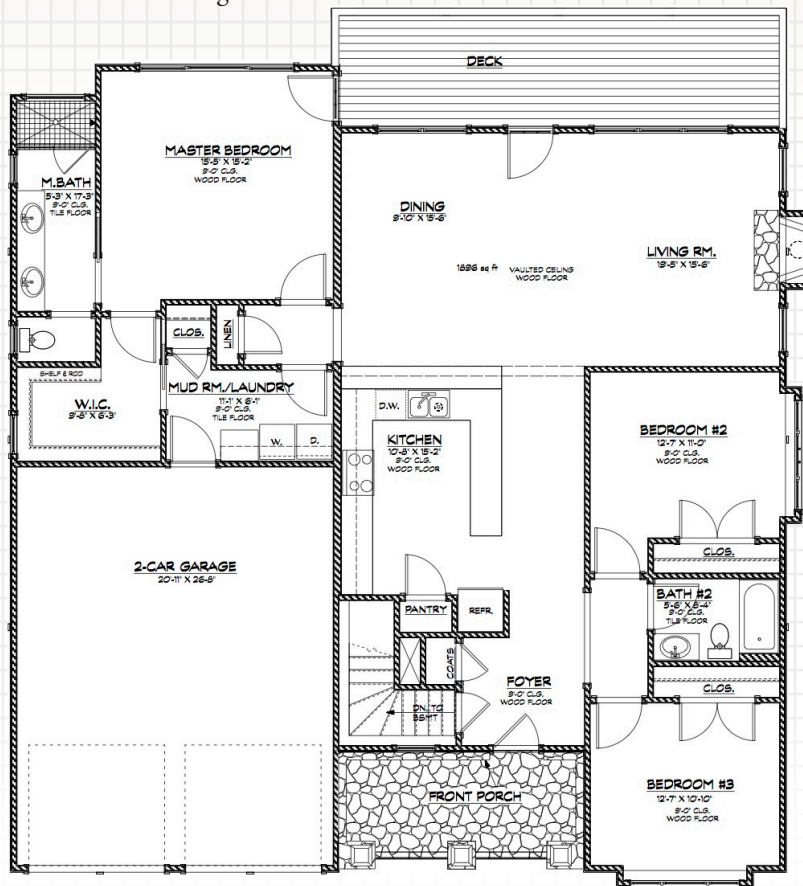
GREEN AND ENERGY EFFICIENT



LOW MAINTENANCE



UNIVERSAL DESIGN



HEATED/FINISHED:
Total: 1,896 Sq. Ft.



706 NC Highway 9, Black Mountain, NC 28711
828.669.4343 • information@LivingStoneConstruction.com
www.LivingStoneConstruction.com

