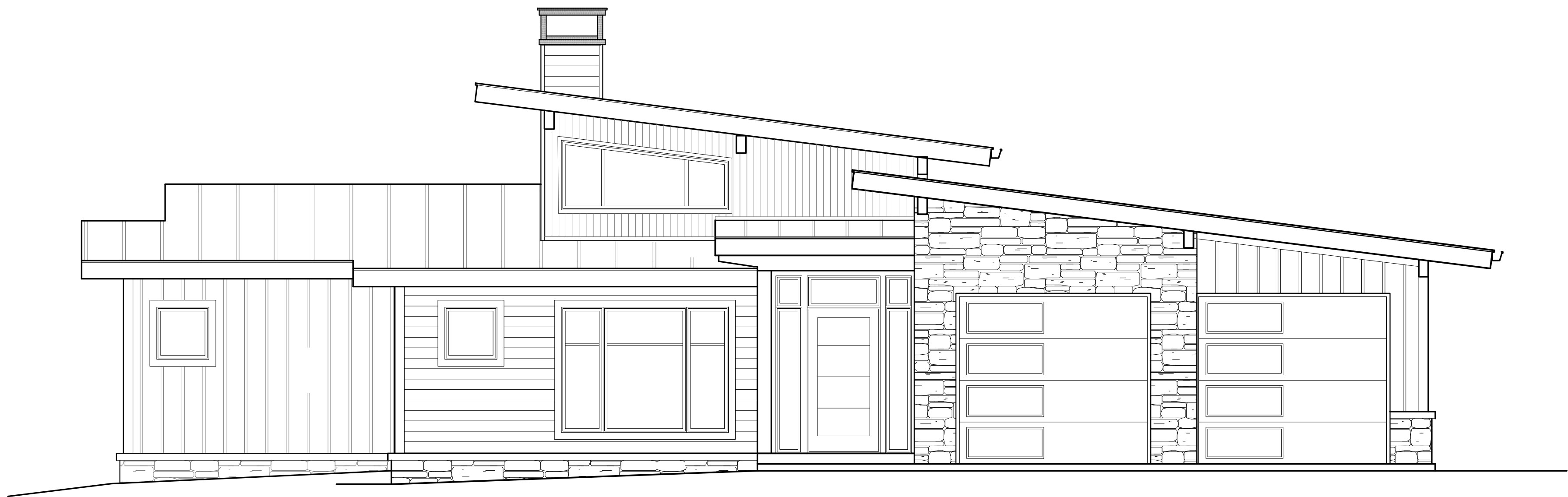


THE ARCHER HOME BY MOSSCREEK

11/12/2021



DRAWING INDEX

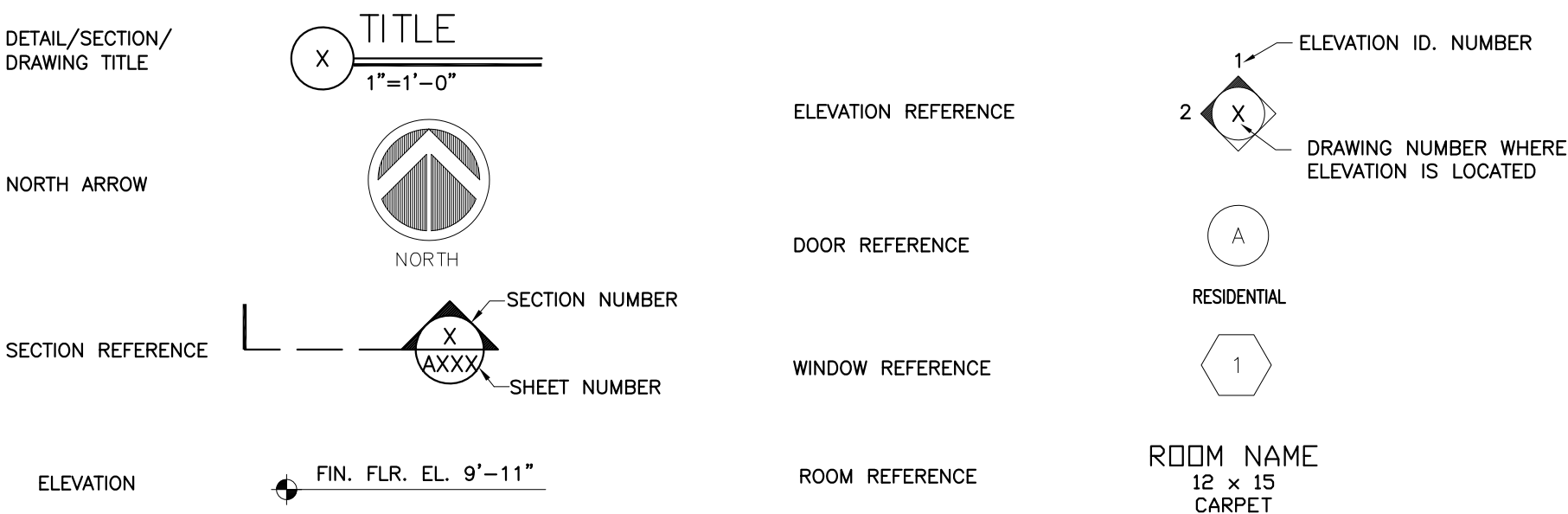
A000 COVER SHEET

A099 FOUNDATION PLAN
A100 LOWERLEVEL PLAN
A101 MAIN LEVEL FLOOR PLAN
A102 HIGH WALLS & ROOF PLAN
A103 MAIN LEVEL FLOOR FRAMING PLAN
A104 ROOF FRAMING PLAN

A200 ELEVATIONS
A201 ELEVATIONS
A300 BUILDING SECTIONS
A301 SECTION DETAILS

E100 LOWER LEVEL LIGHTING & OUTLET PLAN
E101 MAIN LEVEL LIGHTING & OUTLET PLAN

GENERAL SYMBOL LEGEND



ABBREVIATION LEGEND

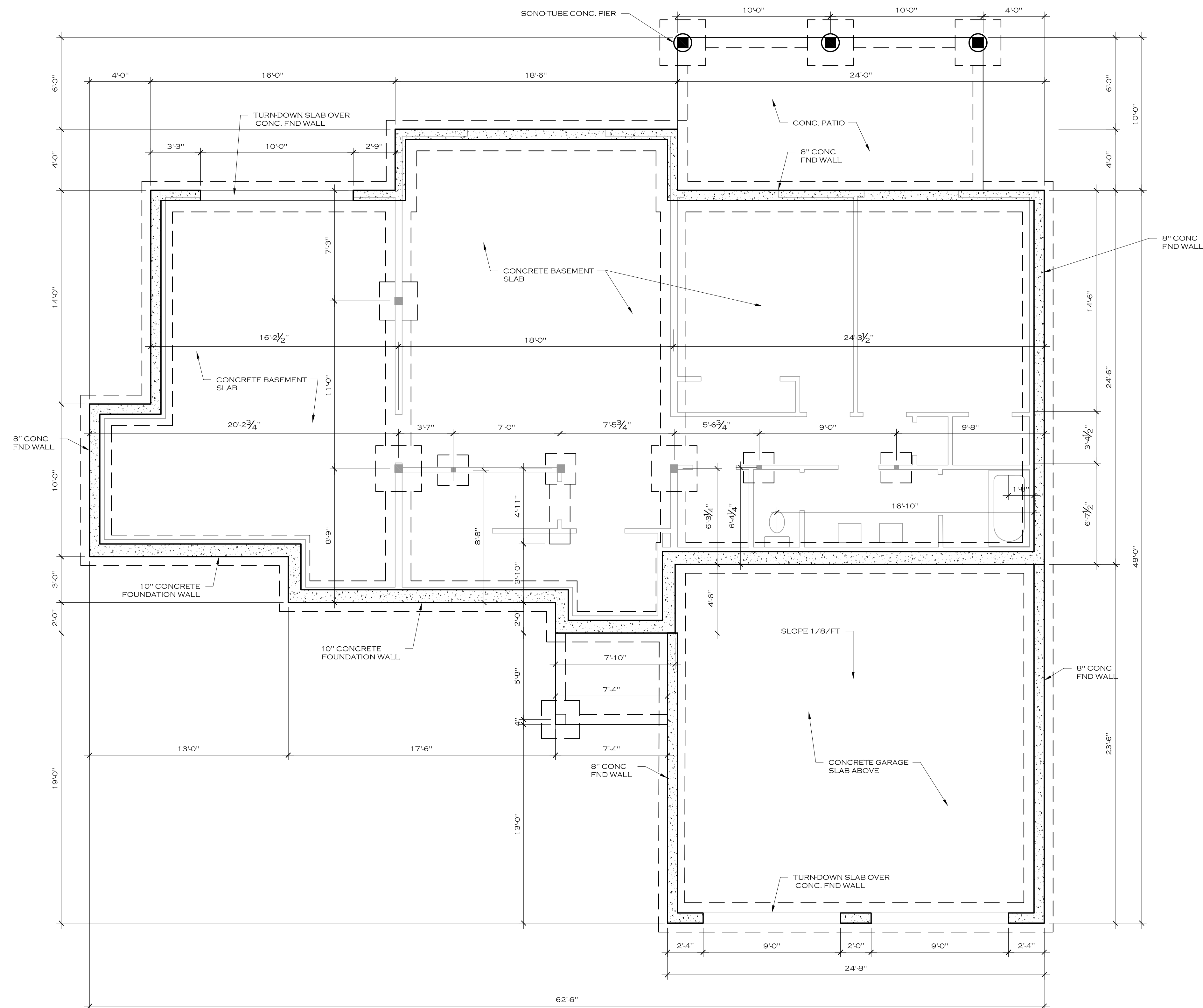
A.B.	ACOUS.	ADJ.	ADJUST.	A.F.F.	ALUM.	ALT.	ANCH.	ARCH.	B.F.F.	BLDG.	BLK.	BM.	B.P.	BRG.	C.F.	C.G.	C.L.	CLG.	CLR.	COL.	COMP.	CONC.	COND.	CONST.	CONT.	CONTR.	DIA.	DIM.	DISP.	DN.	DR.	D.S.	ANCHOR BOLTS	ACOUSICAL	ADJACENT	ADJUSTABLE	ABOVE FINISH FLOOR	ALUMINUM	ALTERNATE	ANCHOR	ARCHITECTURAL OR ARCHITECT	BELOW FINISH FLOOR	BUILDING	BLOCK	BEAM	BASE PLATE	BEARING	CUBIC FEET	CURB & GUTTER	CENTERLINE	CEILING	CLEAR	COLUMN	COMPACTED	CONCRETE	CONDITION	CONSTRUCTION	CONTINUOUS	CONTRACTOR	DIA.	DIMENSION	DISPENSER	DOWN	DOOR	DOWNSPOUT	DWG.	EACH	E.F.	ELEC.	ELEV.	EQ.	EQPT.	ET CETERA	E.W.	EXIST.	EXP.	EXT.	FDN.	F.E.	FIRE EXTINGUISHER	F.F.E.	FINISH	FLR.	FRAME	FEET	FTG.	FOOTING	FUR.	GAUGE	GALV.	G.C.	GL.	GYP.BD.	H.M.	HORIZ.	HT.	DRAWING	EACH FACE	ELECTRICAL	ELEVATION	EQUAL	EQUIPMENT	ET CETERA	EACH WAY	EXISTING	EXPANSION	EXTERIOR	FOUNDATION	FINISH FLOOR ELEVATION	FINISH	FLOOR	FRAME	FEET	FOOTING	FURRING	GAUGE	GALVANIZED	GENERAL CONTRACTOR	GLASS	GYP.SUM. BOARD	HARDWARE	HOLLOW METAL	HORIZONTAL	HEIGHT	IN.	INSUL.	INT.	JST.	JOINT	LAM.	LONG	MAS.	MAX.	MECH.	MFG.	MIN.	MASONARY OPENING	MNT'G.	MTL.	NOT IN CONTRACT	NO.	NOM.	N.T.S.	ON CENTER	PL.	PLAS.	PLYWOOD	PROP.	P.S.F.	P.S.I.	P.T.	PTD.	P.V.C.	R.	INCH	INSULATION	INTERIOR	JOIST	JOINT	LAMINATE	LONG	MASONARY	MAXIMUM	MECHANICAL	MANUFACTURER	MINIMUM	MASONARY	MOUNTING	METAL	NOT IN CONTRACT	NUMBER	NOMINAL	NOT TO SCALE	ON CENTER	PLATE	PLASTIC OR PLASTER	PLYWOOD	PROP.	P.S.F.	P.S.I.	P.T.	PTD.	POLYVINYL CHLORIDE	RISER	REINFORCING	REINFORCING	REQUIRED	ROUGH OPENING	R.O.	R.O.W.	SCHED.	SIM.	SPECS.	SO.	S.F.	STL.	STRUC.	SUSP.	T.	T'HOLD.	TK.	TLT.	T.O.B.	T.O.F.	T.O.M.	T.O.S.	T.O.W.	TYP.	U.N.O.	VERT.	W/	WD.	W.D.W.	W.H.	W.P.	WT.	W.W.M.	REINFORCING	REQUIRED	ROUGH OPENING	R.O.	R.O.W.	SCHEDULE	SIMILAR	SPECIFICATIONS	SQUARE	SQUARE FEET	STEEL	STRUCTURAL	SUSPENDED	TREAD	THRESHOLD	THICKNESS	TOILET	TOP OF BEAM	TOP OF FOOTING	TOP OF MASONARY	TOP OF STEEL	TOP OF WALL	TYPICAL	UNLESS NOTED OTHERWISE	VERTICAL	WITH	WOOD OR WIDTH	WINDOW	WATER HEATER	WEATHER PROOF	WEIGHT	WELDED WIRE MESH
------	--------	------	---------	--------	-------	------	-------	-------	--------	-------	------	-----	------	------	------	------	------	------	------	------	-------	-------	-------	--------	-------	--------	------	------	-------	-----	-----	------	--------------	-----------	----------	------------	--------------------	----------	-----------	--------	----------------------------	--------------------	----------	-------	------	------------	---------	------------	---------------	------------	---------	-------	--------	-----------	----------	-----------	--------------	------------	------------	------	-----------	-----------	------	------	-----------	------	------	------	-------	-------	-----	-------	-----------	------	--------	------	------	------	------	-------------------	--------	--------	------	-------	------	------	---------	------	-------	-------	------	-----	---------	------	--------	-----	---------	-----------	------------	-----------	-------	-----------	-----------	----------	----------	-----------	----------	------------	------------------------	--------	-------	-------	------	---------	---------	-------	------------	--------------------	-------	----------------	----------	--------------	------------	--------	-----	--------	------	------	-------	------	------	------	------	-------	------	------	------------------	--------	------	-----------------	-----	------	--------	-----------	-----	-------	---------	-------	--------	--------	------	------	--------	----	------	------------	----------	-------	-------	----------	------	----------	---------	------------	--------------	---------	----------	----------	-------	-----------------	--------	---------	--------------	-----------	-------	--------------------	---------	-------	--------	--------	------	------	--------------------	-------	-------------	-------------	----------	---------------	------	--------	--------	------	--------	-----	------	------	--------	-------	----	---------	-----	------	--------	--------	--------	--------	--------	------	--------	-------	----	-----	--------	------	------	-----	--------	-------------	----------	---------------	------	--------	----------	---------	----------------	--------	-------------	-------	------------	-----------	-------	-----------	-----------	--------	-------------	----------------	-----------------	--------------	-------------	---------	------------------------	----------	------	---------------	--------	--------------	---------------	--------	------------------



A DIVISION OF DESIGNER ALLIANCE, INC.

127 W. JACKSON AVENUE, SUITE 202
KNOXVILLE, TN 37902
PHONE (865) 637-2166
FAX (865) 637-2188
WWW.MOSSCREEK.NET

COPYRIGHT 2011 MOSSCREEK DESIGNS. THE USE OF THIS DOCUMENT AND THE HOME DESIGN HEREIN IS STRICTLY CONTROLLED BY US COPYRIGHT LAW. THIS DOCUMENT MAY NOT BE COPIED NOR MAY THE HOME DESIGN BE COPIED, EMULATED, OR REFERENCED BY EITHER AN INDIVIDUAL OR A HOME COMPANY WITHOUT PRIOR WRITTEN APPROVAL BY MOSSCREEK DESIGNS. ALL VIOLATIONS WILL BE PROSECUTED TO THE FULLEST EXTENT OF THE LAW WITH A MINIMUM OF A \$100,000 PER INCIDENT TO BOTH THE CONSUMER AND THE HOME COMPANY.



MOSSCREEK

THE ART AND CRAFT OF ACUSTIC HOME DESIGN

MOSSCREEK
27 W. JACKSON AVE.
SUITE 202
KNOXVILLE, TN 37902
TEL: (865) 637-2166
FAX: (865) 637-2188
WWW.MOSSCREEK.NET

DIVISION OF DESIGNERS ALLIANCE, INC.

THE ARCHER HOME BY MOSSCREEK

vision no.

Project No.

d File HBM108-00A099.dwg

awn

H

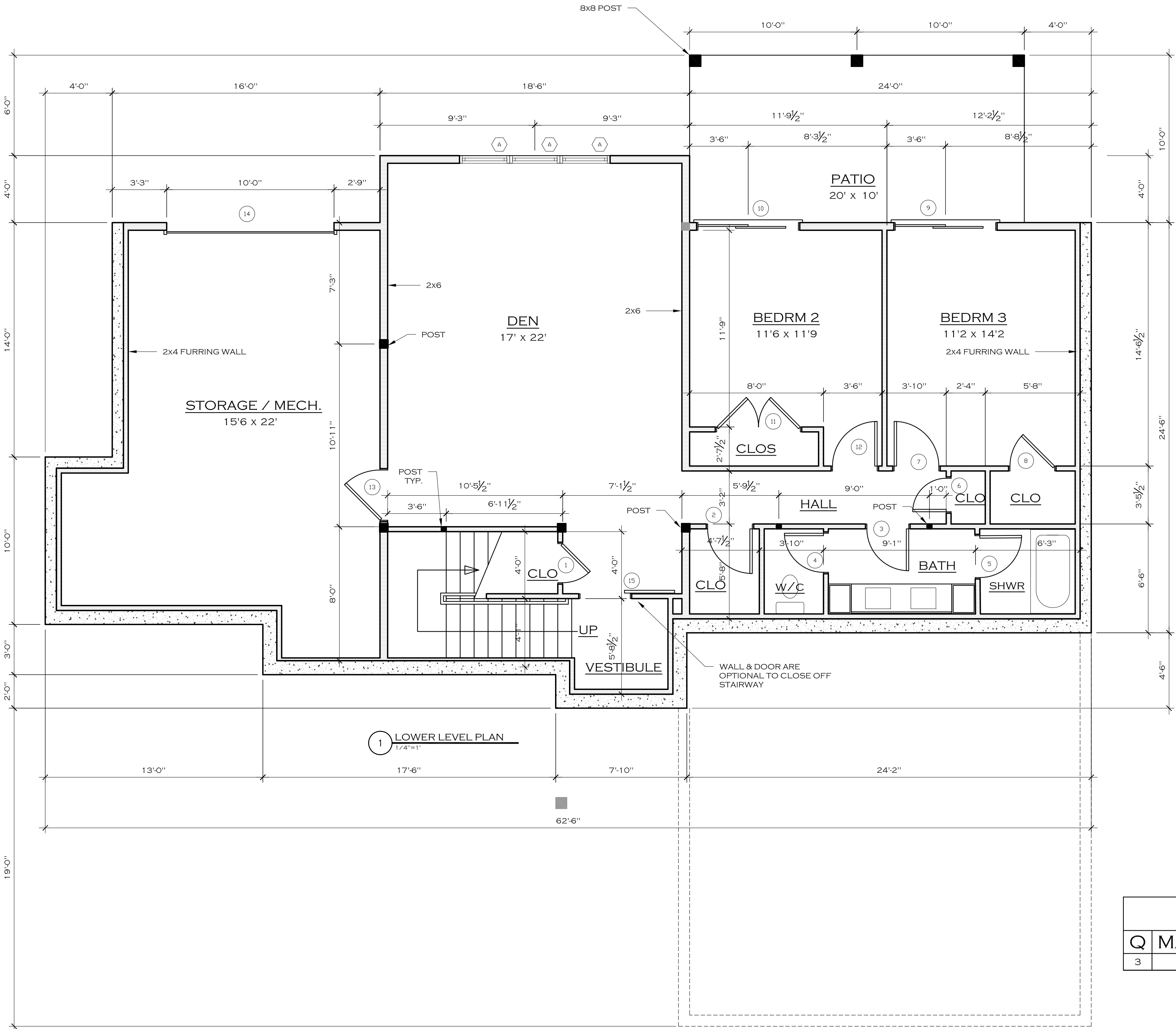
te 11/12/2021

ale $1/4"=1'-0"$

FOUNDATION PLAN

099

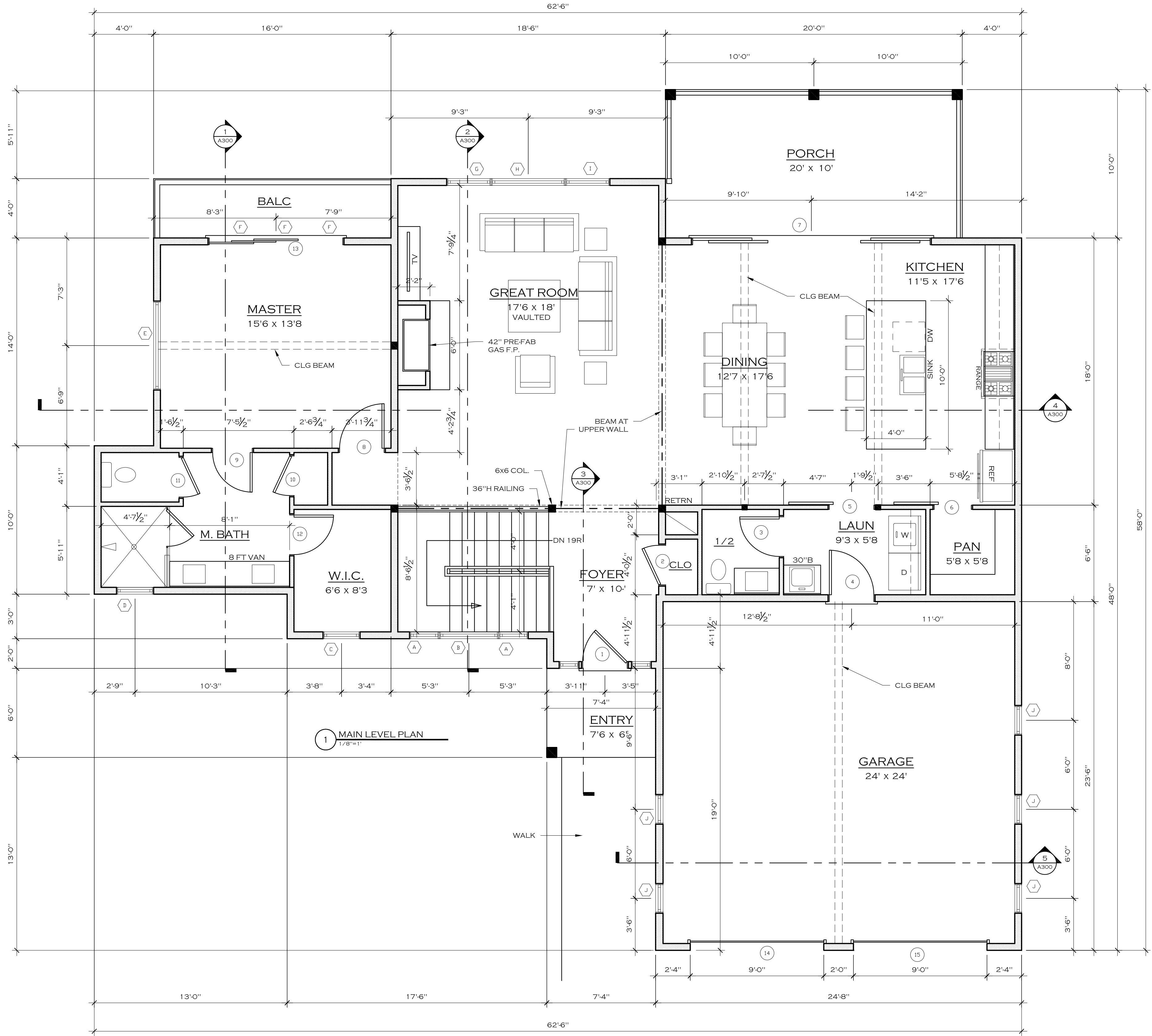
COPYRIGHT 2021 MOSSCREEK DESIGNS. THE USE OF THIS DOCUMENT AND THE HOME DESIGN HEREIN IS STRICTLY CONTROLLED BY US COPYRIGHT LAW. THIS DOCUMENT MAY NOT BE COPIED NOR MAY THE HOME DESIGN BE COPIED, EMULATED, OR REFERENCED BY EITHER AN INDIVIDUAL OR A HOME COMPANY WITHOUT PRIOR WRITTEN APPROVAL BY MOSSCREEK DESIGNS. ALL VIOLATIONS WILL BE PROSECUTED TO THE FULLEST EXTENT OF THE LAW WITH A MINIMUM OF A \$100,000 PER INCIDENT TO BOTH THE CONSUMER AND THE HOME COMPANY.



DOOR SCHEDULE				
Q	MARK	WIDTH	HEIGHT	REMARKS
1	1	2'-4"	8'-0"	
1	2	2'-8"	8'-0"	
1	3	2'-6"	8'-0"	
1	4	2'-4"	8'-0"	
1	5	2'-6"	8'-0"	
1	6	2'-0"	8'-0"	
1	7	2'-8"	8'-0"	
1	8	2'-8"	8'-0"	
1	9	6'-0"	8'-0"	SLIDER
1	10	6'-0"	8'-0"	SLIDER
1	11	5'-0"	8'-0"	
1	12	2'-8"	8'-0"	
1	13	3'-0"	8'-0"	
1	14	10'-0"	8'-0"	GARAGE DOOR

WINDOW SCHEDULE					
Q	MARK	WIDTH	HEIGHT	HEAD HEIGHT	REMARKS
3	A	3'-0"	6'-0"	8'-0"	

COPYRIGHT 2021 MOSSCREEK DESIGNS. THE USE OF THIS DOCUMENT AND THE HOME DESIGN HEREIN IS STRICTLY CONTROLLED BY US COPYRIGHT LAW. THIS DOCUMENT MAY NOT BE COPIED NOR MAY THE HOME DESIGN BE COPIED, EMULATED, OR REFERENCED BY EITHER AN INDIVIDUAL OR A HOME COMPANY WITHOUT PRIOR WRITTEN APPROVAL BY MOSSCREEK DESIGNS. ALL VIOLATIONS WILL BE PROSECUTED TO THE FULLEST EXTENT OF THE LAW WITH A MINIMUM OF A \$100,000 PER INCIDENT TO BOTH THE CONSUMER AND THE HOME COMPANY.



SQUARE FOOTAGE	
MAIN LEVEL CONDITIONED	1,621 S.F.
LOWER LEVEL CONDITIONED	1,186 S.F.
TOTAL	2,807 S.F.
GARAGE	
COVERED PORCHES	575 S.F.
BALCONY	245 S.F.
BASEMENT STORAGE / MECH	64 S.F.
	445 S.F.

WINDOW SCHEDULE					
Q	MARK	WIDTH	HEIGHT	HEAD HEIGHT	REMARKS
2	A	2'-0"	6'-0"	7'-0"	
1	B	4'-0"	6'-0"	7'-0"	
1	C	2'-6"	2'-6"	7'-0"	
1	D	2'-6"	2'-6"	7'-0"	
1	E	6'-0"	2'-0"	8'-6"	
3	F	3'-0"	2'-0"	10'-4"	
1	G	3'-0"	7'-0"	8'-0"	
1	H	5'-0"	7'-0"	8'-0"	
1	I	3'-0"	7'-0"	8'-0"	
5	J	2'-0"	2'-0"	7'-0"	

DOOR SCHEDULE				
Q	MARK	WIDTH	HEIGHT	REMARKS
1	1	3'-0"	7'-0"	ENTRY DOOR W/ TRANS. & S
1	2	2'-8"	6'-8"	
1	3	2'-8"	6'-8"	
1	4	3'-0"	6'-8"	
1	5	3'-0"	6'-8"	BARN STYLE DOOR
1	6	2'-6"	6'-8"	BARN STYLE DOOR
1	7	16'-0"	8'-0"	4-PANEL SLIDER
1	8	3'-0"	6'-8"	
1	9	2'-8"	6'-8"	
1	10	2'-8"	6'-8"	
1	11	2'-8"	6'-8"	
1	12	2'-8"	6'-8"	
1	13	9'-0"	8'-0"	3-PANEL SLIDER
1	14	9'-0"	8'-0"	GARAGE DOOR
1	15	9'-0"	8'-0"	GARAGE DOOR

MOSSCREEK

THE ART AND CRAFT OF
RUSTIC HOME DESIGN

MOSSCREEK

127 W. JACKSON AVE.
SUITE 202
KNOXVILLE, TN 37902
TEL: (865) 637-2166
FAX: (865) 637-2188
WWW.MOSSCREEK.NET
A DIVISION OF DESIGNERS ALLIANCE, INC.

THE ARCHER
HOME BY MOSSCREEK

Revision no.

Project No.

Cad File HBM108-00A101.dwg

Drawn

Checked AH

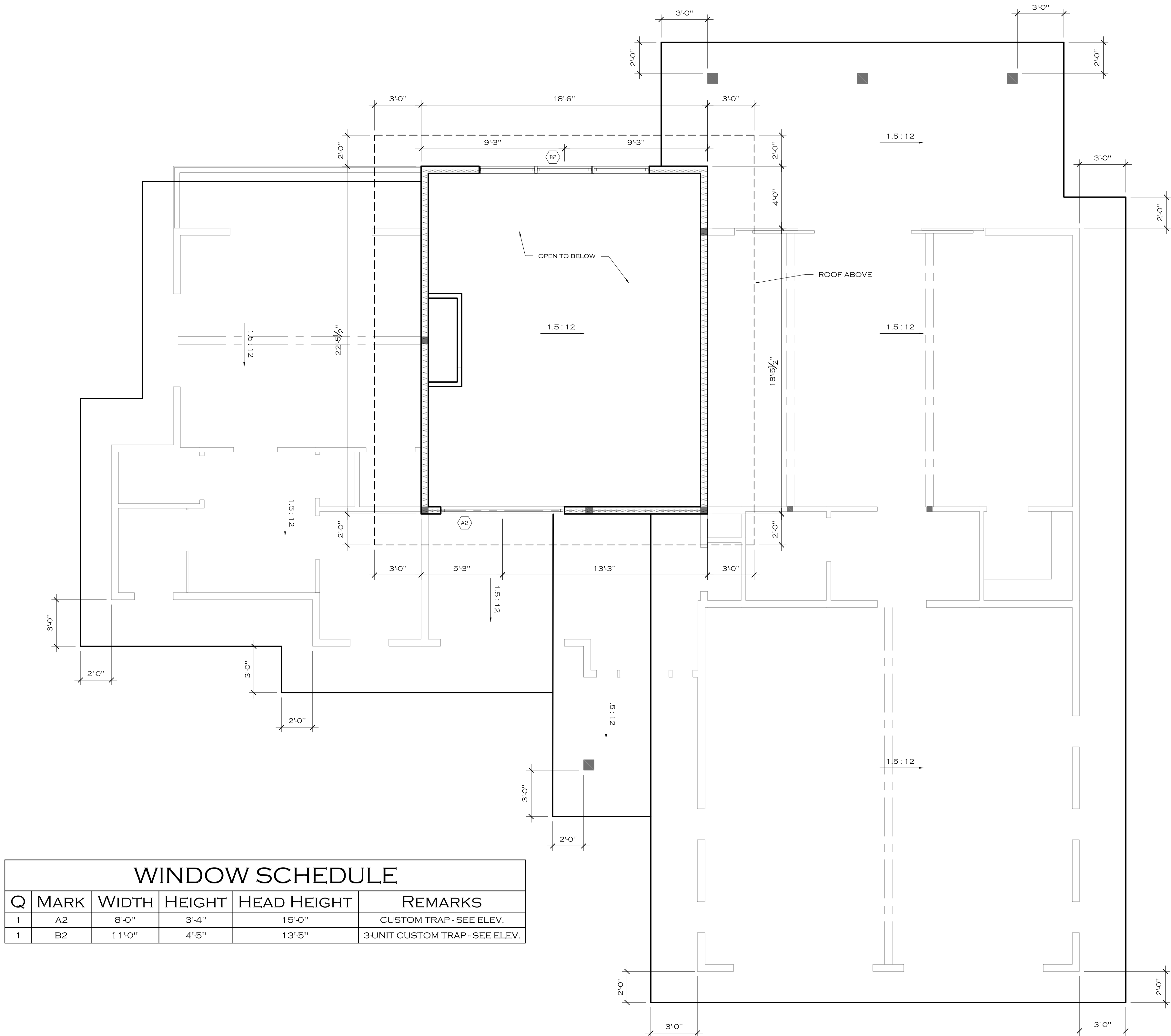
Date 11/12/2021

Scale 1/4"=1'-0"

Title/No.

MAIN LEVEL
FLOOR PLAN

THE ARCHER
HOME BY MOSSCREEK



COPYRIGHT 2021 MOSSCREEK DESIGNS. THE USE OF THIS DOCUMENT AND THE HOME DESIGN HEREIN IS STRICTLY CONTROLLED BY US COPYRIGHT LAW. THIS DOCUMENT MAY NOT BE COPIED NOR MAY THE HOME DESIGN BE COPIED, EMULATED, OR REFERENCED BY EITHER AN INDIVIDUAL OR A HOME COMPANY WITHOUT PRIOR WRITTEN APPROVAL BY MOSSCREEK DESIGNS. ALL VIOLATIONS WILL BE PROSECUTED TO THE FULLEST EXTENT OF THE LAW WITH A MINIMUM OF A \$100,000 PER INCIDENT TO BOTH THE CONSUMER AND THE HOME COMPANY.

Revision no.

Project No.

Cad File HBM108-00A102.dwg

Drawn

Checked AH

Date 11/12/2021

Scale 1/4"=1'-0"

Title/No.

HIGH WALL
& ROOF
PLAN

A102

THE ARCHER
HOME BY MOSSCREEK

Revision no.

Project No.

Cad File HBM108-00A103.dwg

Drawn

Checked AH

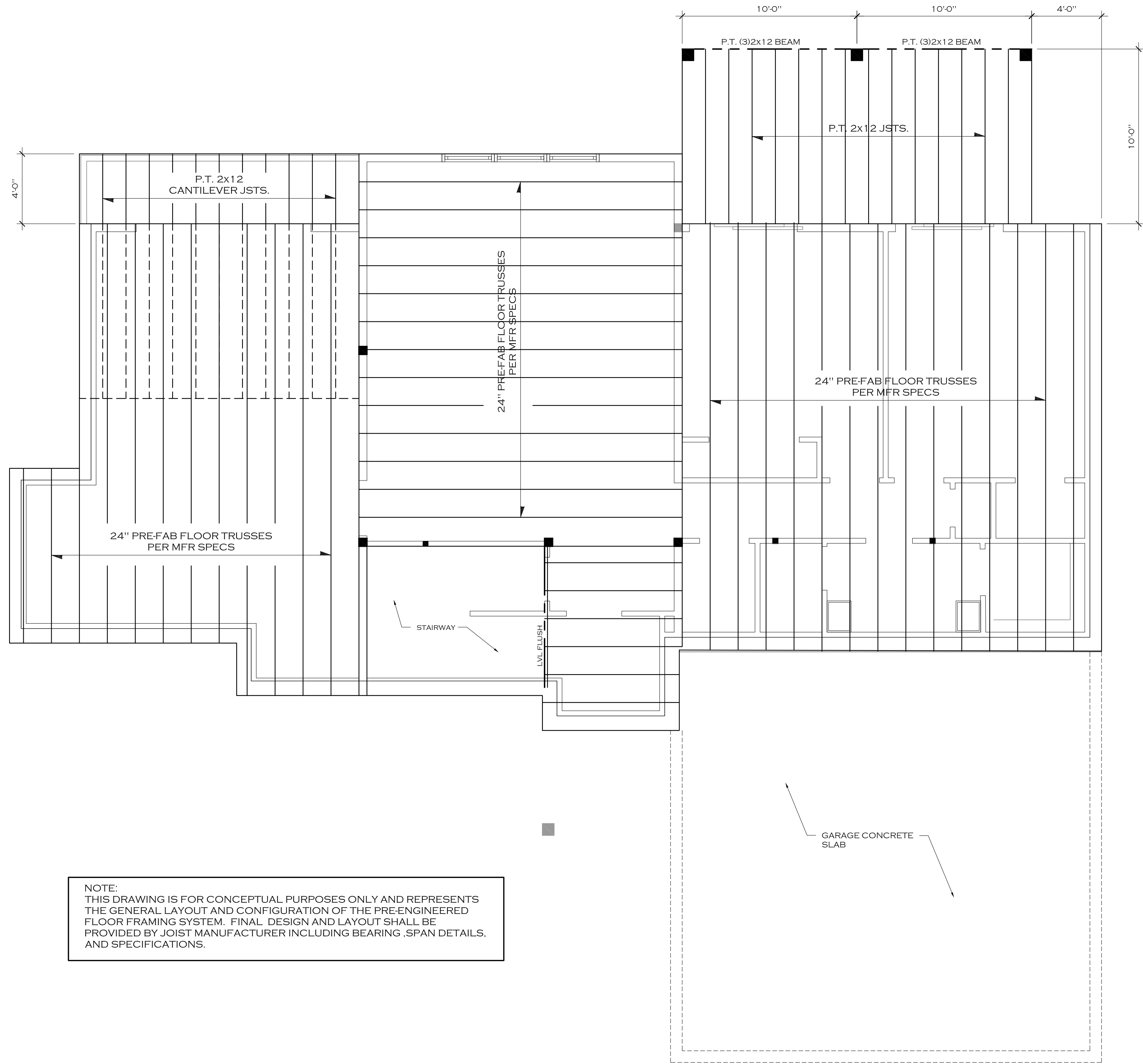
Date 11/12/2021

Scale 1/4"=1'-0"

Title/No.

MAIN LEVEL
FLOOR
FRAMING

A103



COPYRIGHT 2021 MOSSCREEK DESIGNS. THE USE OF THIS DOCUMENT AND THE HOME DESIGN HEREIN IS STRICTLY CONTROLLED BY US COPYRIGHT LAW. THIS DOCUMENT MAY NOT BE COPIED NOR MAY THE HOME DESIGN BE COPIED, EMULATED, OR REFERENCED BY EITHER AN INDIVIDUAL OR A HOME COMPANY WITHOUT PRIOR WRITTEN APPROVAL BY MOSSCREEK DESIGNS. ALL VIOLATIONS WILL BE PROSECUTED TO THE FULLEST EXTENT OF THE LAW WITH A MINIMUM OF A \$100,000 PER INCIDENT TO BOTH THE CONSUMER AND THE HOME COMPANY.

THE ARCHER
HOME BY MOSSCREEK

Revision no.

Project No.

Cad File HBM108-00A104.dwg

Drawn

Checked AH

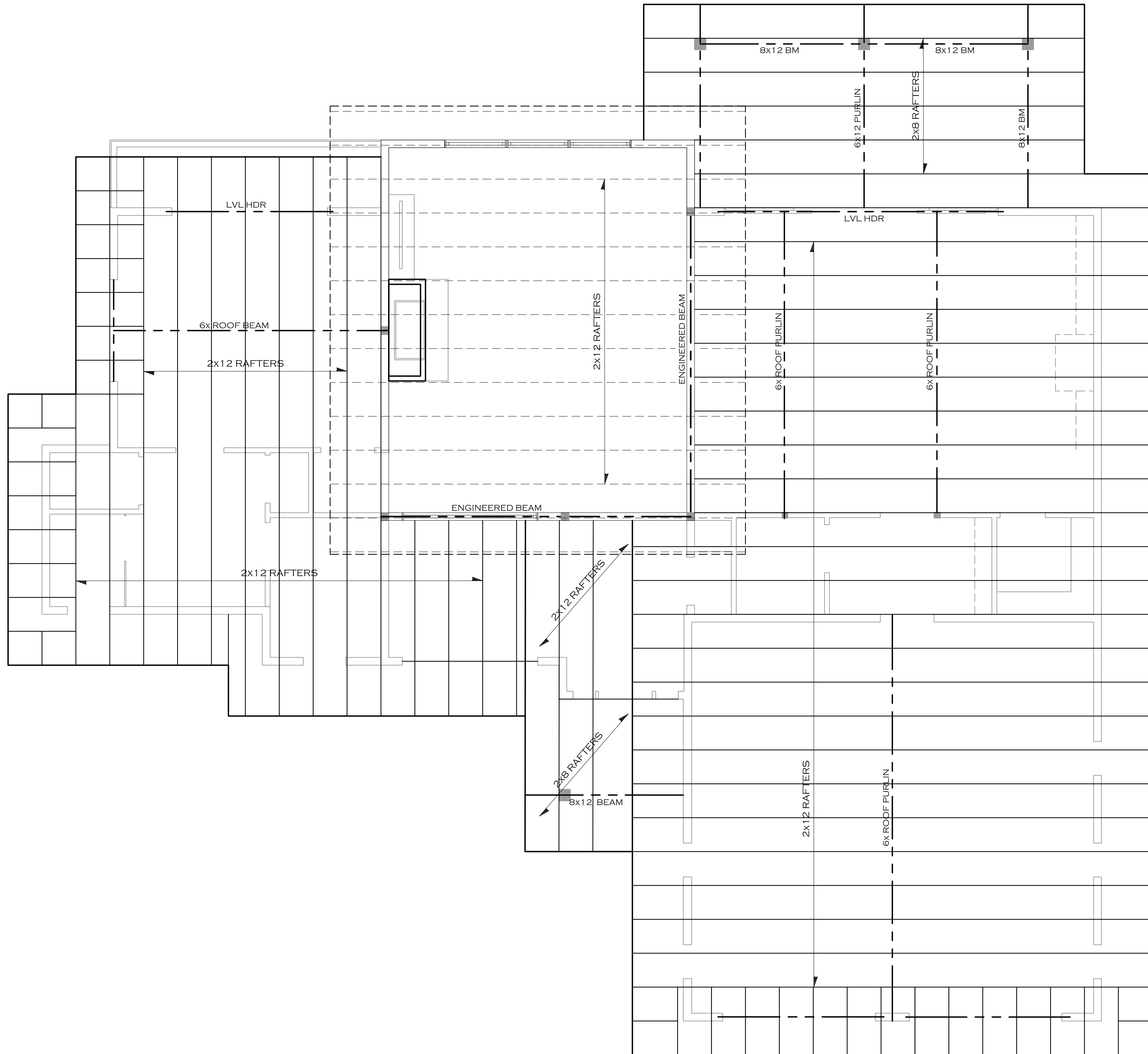
Date 11/09/2021

Scale 1/4"=1'-0"

Title/No.

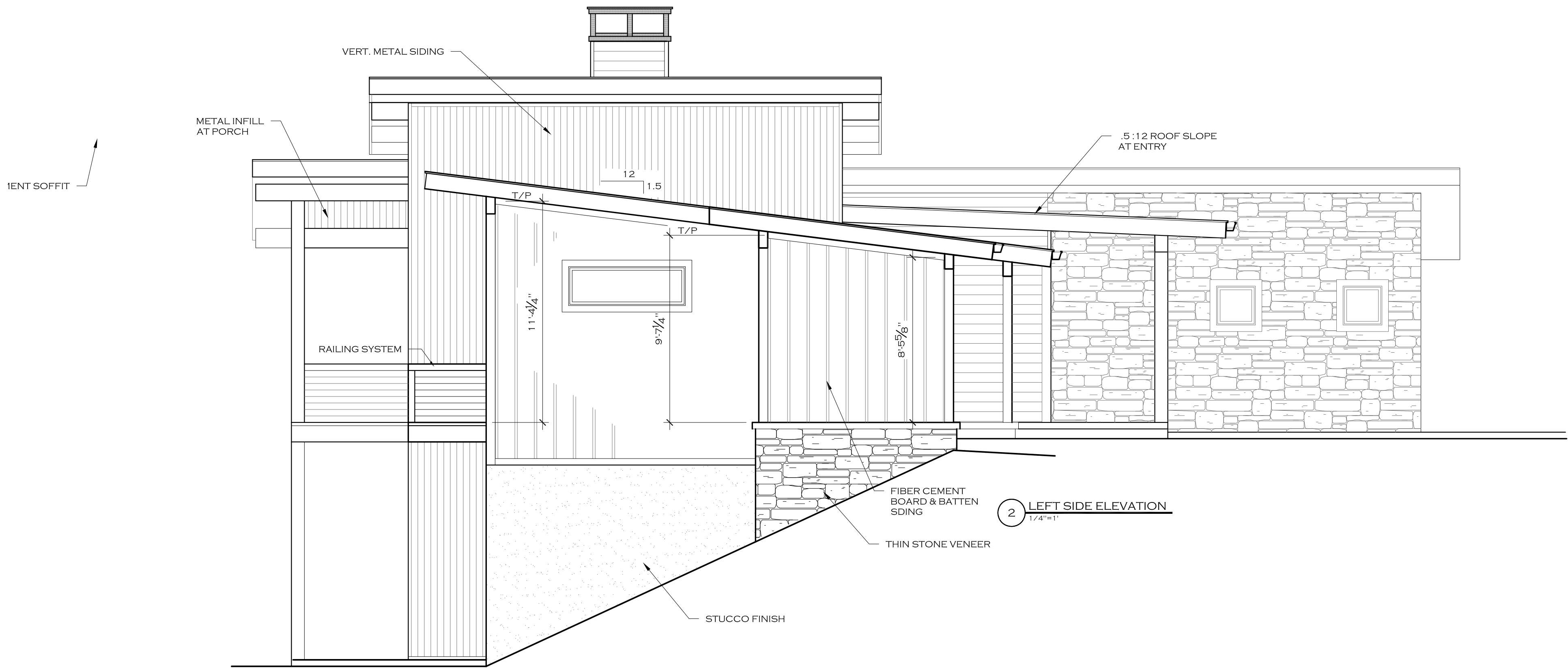
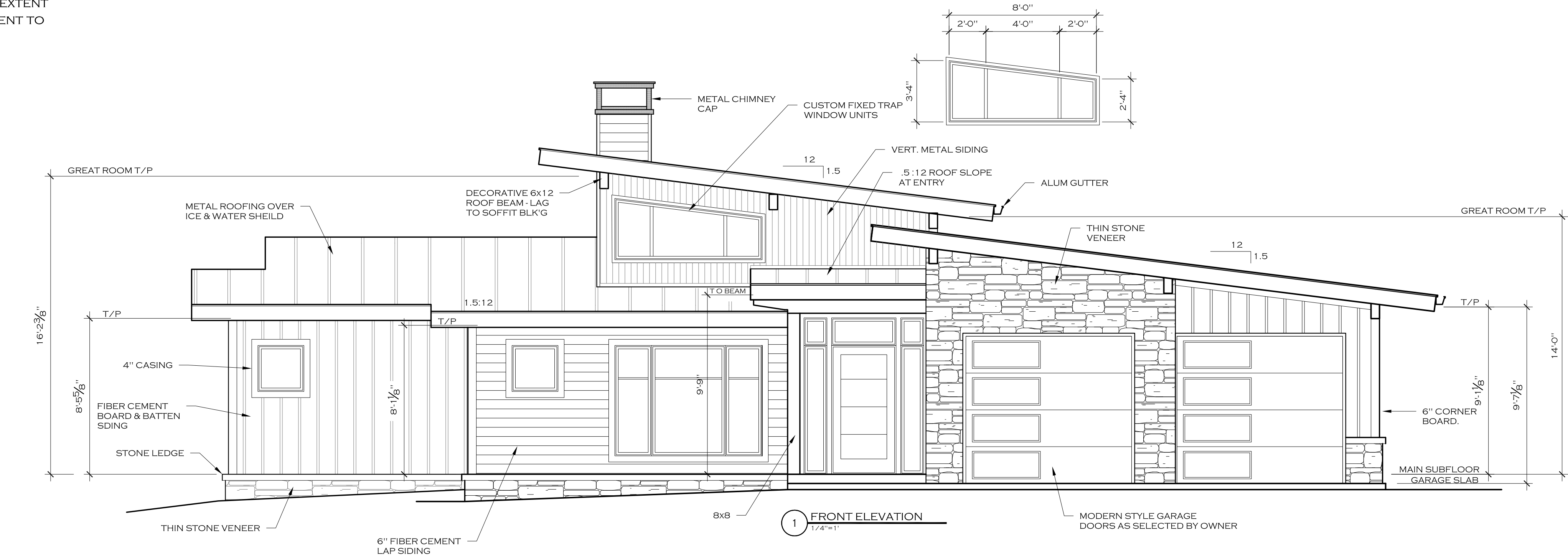
ROOF
FRAMING
PLAN

A104



COPYRIGHT 2021 MOSSCREEK DESIGNS. THE USE OF THIS DOCUMENT AND THE HOME DESIGN HEREIN IS STRICTLY CONTROLLED BY US COPYRIGHT LAW. THIS DOCUMENT MAY NOT BE COPIED NOR MAY THE HOME DESIGN BE COPIED, EMULATED, OR REFERENCED BY EITHER AN INDIVIDUAL OR A HOME COMPANY WITHOUT PRIOR WRITTEN APPROVAL BY MOSSCREEK DESIGNS. ALL VIOLATIONS WILL BE PROSECUTED TO THE FULLEST EXTENT OF THE LAW WITH A MINIMUM OF A \$100,000 PER INCIDENT TO BOTH THE CONSUMER AND THE HOME COMPANY.

COPYRIGHT 2021 MOSSCREEK DESIGNS. THE USE OF THIS DOCUMENT AND THE HOME DESIGN HEREIN IS STRICTLY CONTROLLED BY US COPYRIGHT LAW. THIS DOCUMENT MAY NOT BE COPIED NOR MAY THE HOME DESIGN BE COPIED, EMULATED, OR REFERENCED BY EITHER AN INDIVIDUAL OR A HOME COMPANY WITHOUT PRIOR WRITTEN APPROVAL BY MOSSCREEK DESIGNS. ALL VIOLATIONS WILL BE PROSECUTED TO THE FULLEST EXTENT OF THE LAW WITH A MINIMUM OF A \$100,000 PER INCIDENT TO BOTH THE CONSUMER AND THE HOME COMPANY.



MOSSCREEK

THE ART AND CRAFT OF
RUSTIC HOME DESIGN

MOSSCREEK
127 W. JACKSON AVE.
SUITE 202
KNOXVILLE, TN 37902
TEL: (865) 637-2166
FAX: (865) 637-2188
WWW.MOSSCREEK.NET

A DIVISION OF DESIGNERS ALLIANCE, INC.

THE ARCHER
HOME BY MOSSCREEK

Revision no.

Project No.

Cad File HBM108-00A200.dwg

Drawn

Checked AH

Date 11/12/2021

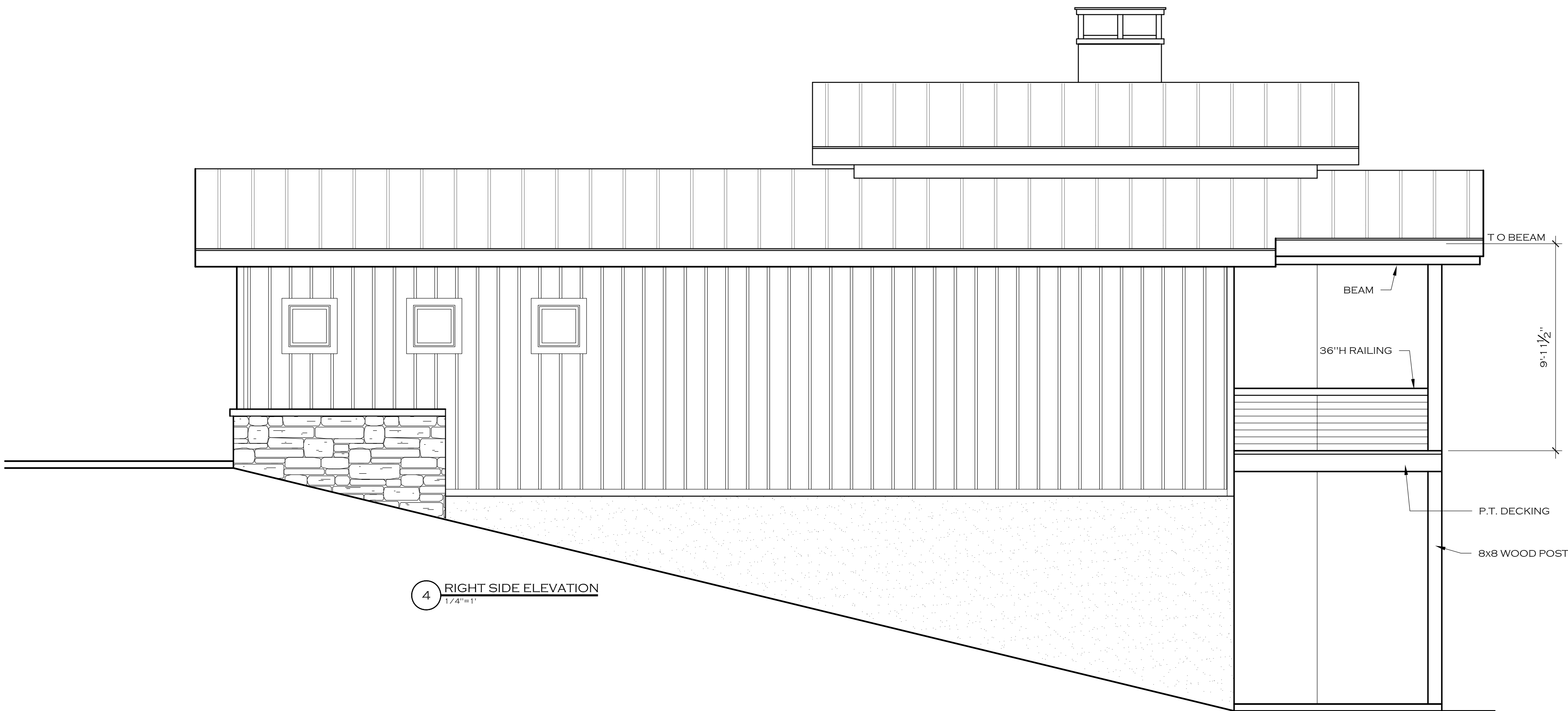
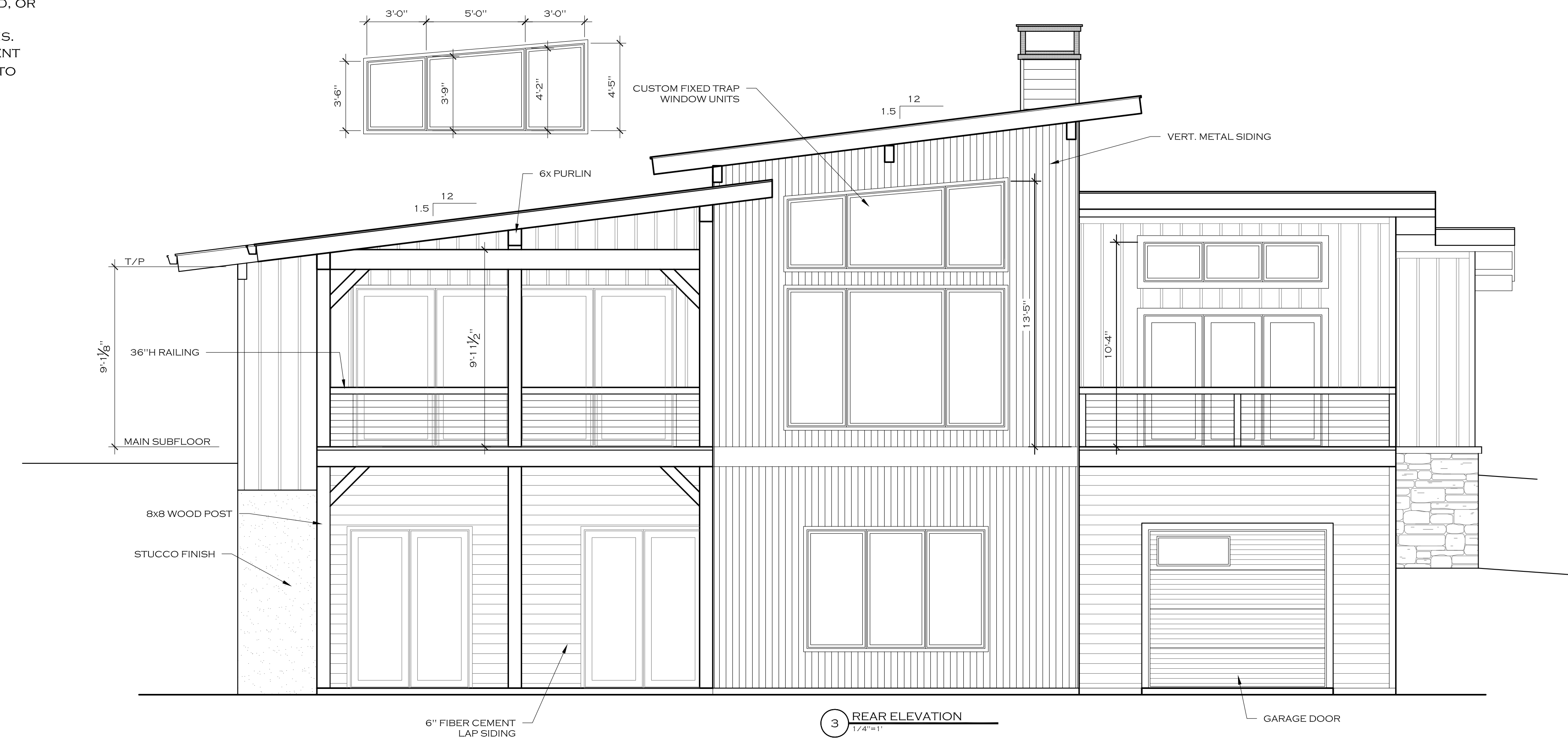
Scale 1/4"=1'-0"

Title/No.

ELEVATIONS

A200

COPYRIGHT 2021 MOSSCREEK DESIGNS. THE USE OF THIS DOCUMENT AND THE HOME DESIGN HEREIN IS STRICTLY CONTROLLED BY US COPYRIGHT LAW. THIS DOCUMENT MAY NOT BE COPIED NOR MAY THE HOME DESIGN BE COPIED, EMULATED, OR REFERENCED BY EITHER AN INDIVIDUAL OR A HOME COMPANY WITHOUT PRIOR WRITTEN APPROVAL BY MOSSCREEK DESIGNS. ALL VIOLATIONS WILL BE PROSECUTED TO THE FULLEST EXTENT OF THE LAW WITH A MINIMUM OF A \$100,000 PER INCIDENT TO BOTH THE CONSUMER AND THE HOME COMPANY.



MOSSCREEK

THE ART AND CRAFT OF
RUSTIC HOME DESIGN

MOSSCREEK
127 W. JACKSON AVE.
SUITE 202
KNOXVILLE, TN 37902
TEL: (865) 637-2166
FAX: (865) 637-2188
WWW.MOSSCREEK.NET
A DIVISION OF DESIGNERS ALLIANCE, INC.

THE ARCHER HOME BY MOSSCREEK

Revision no.

Project No.

Cad File HBM108-00A201.dwg

Drawn

Checked AH

Date 11/12/2021

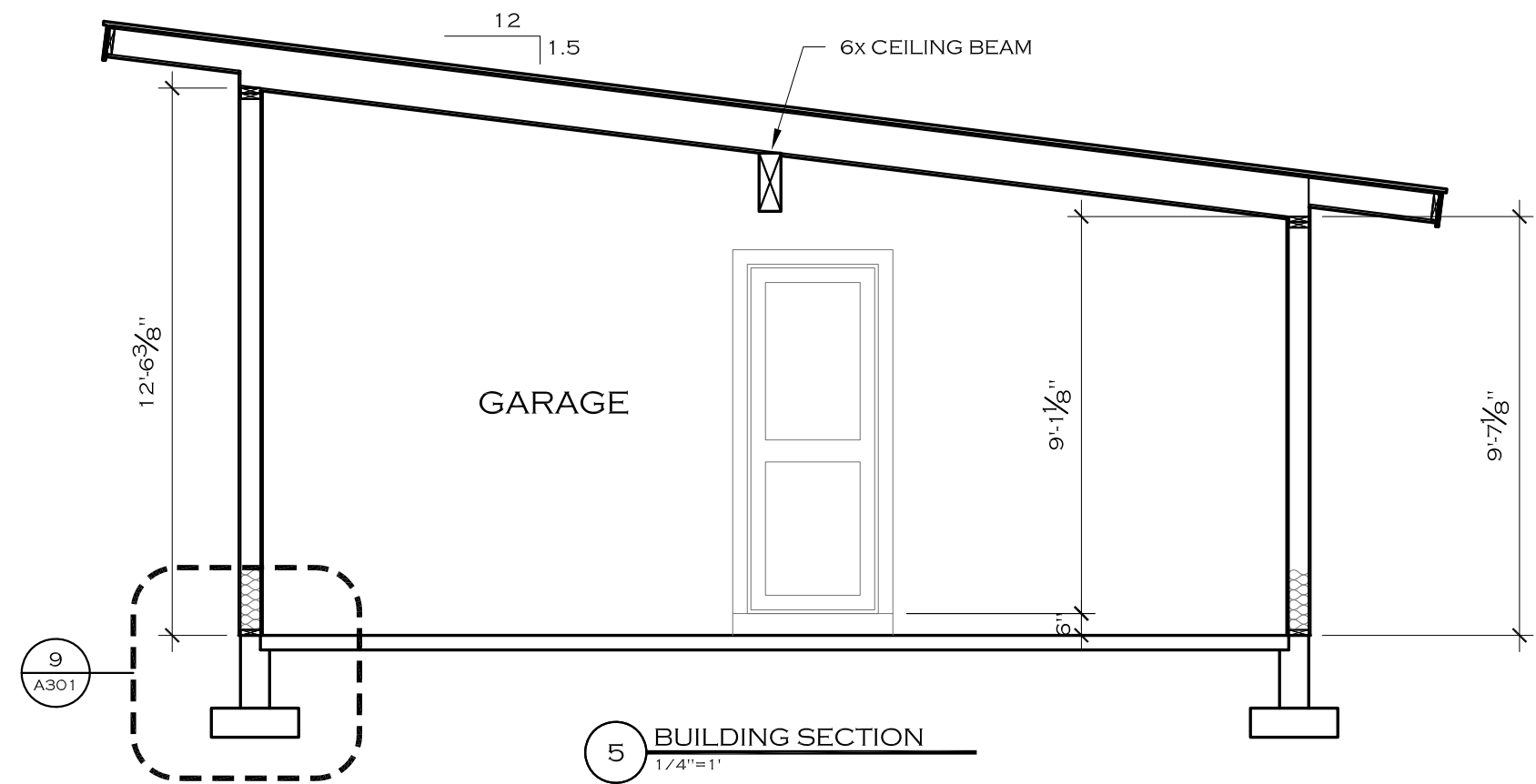
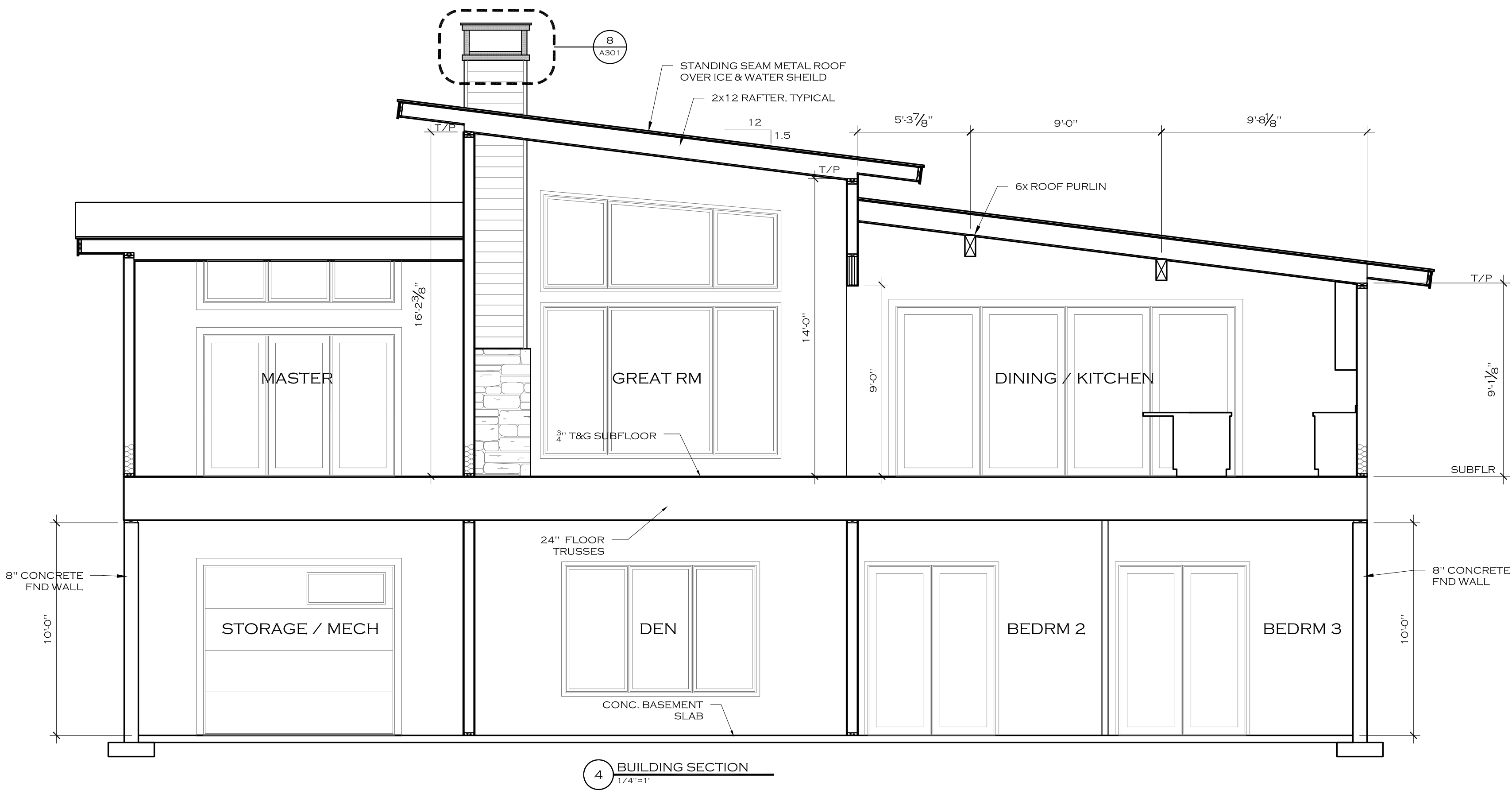
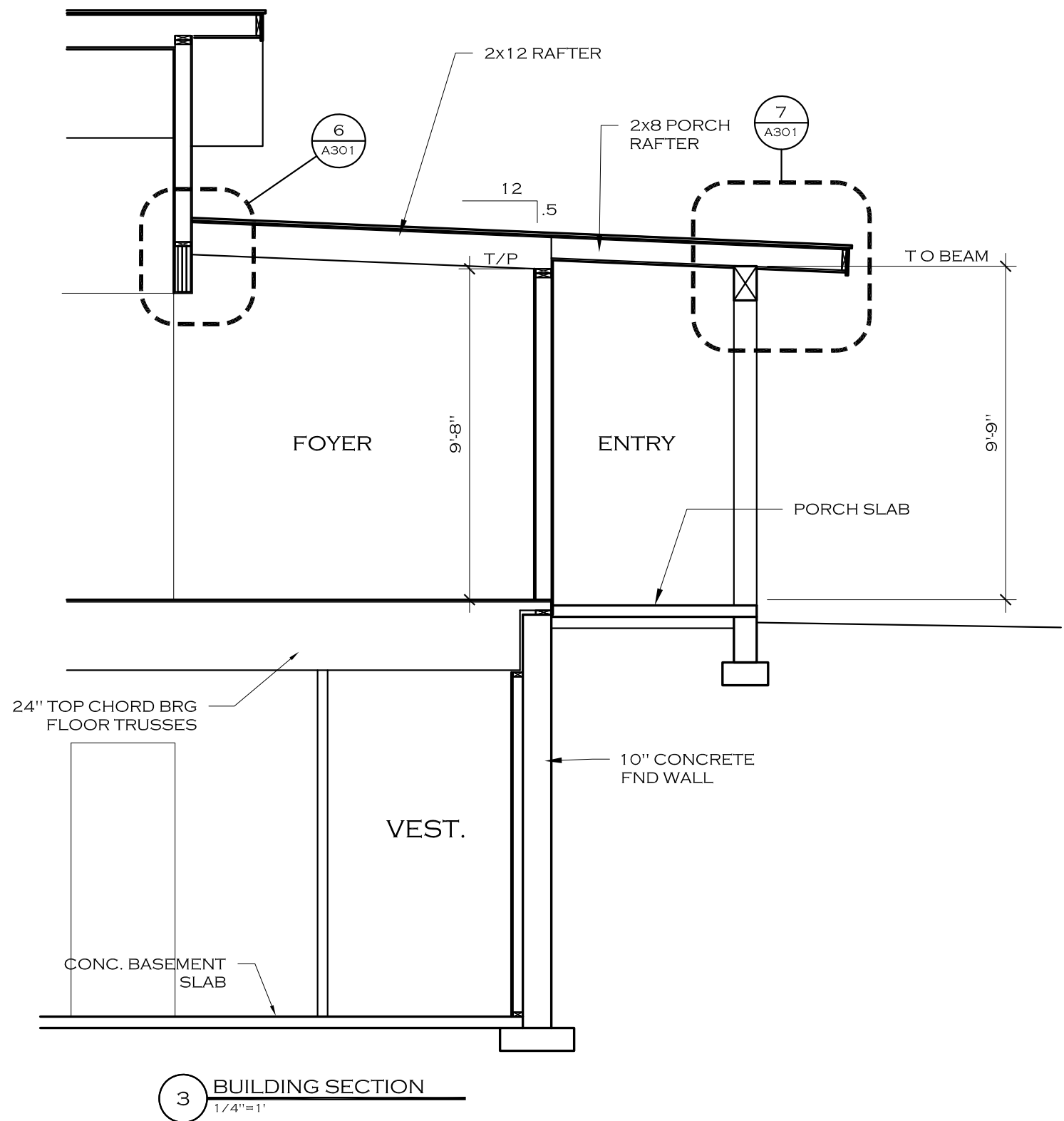
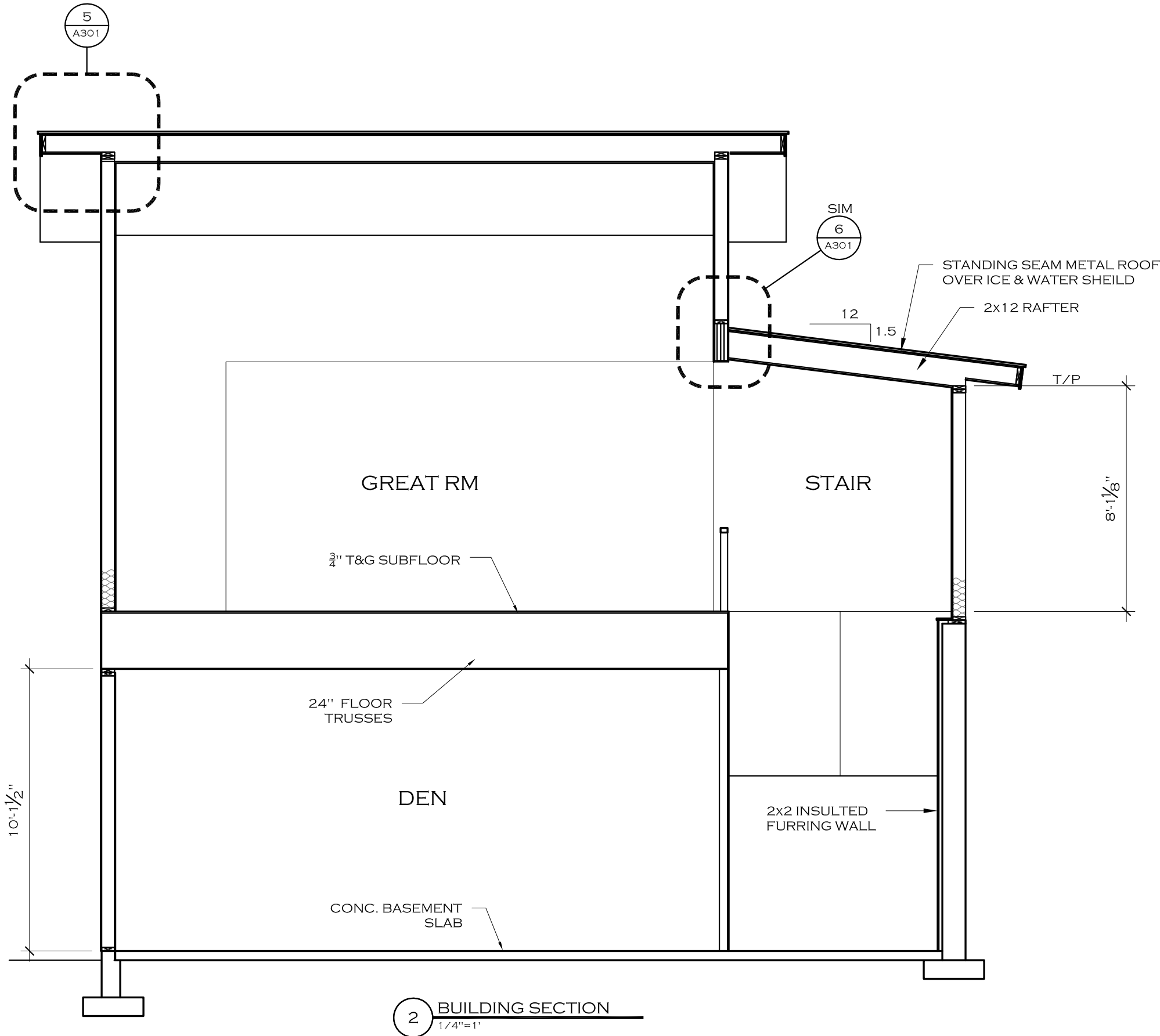
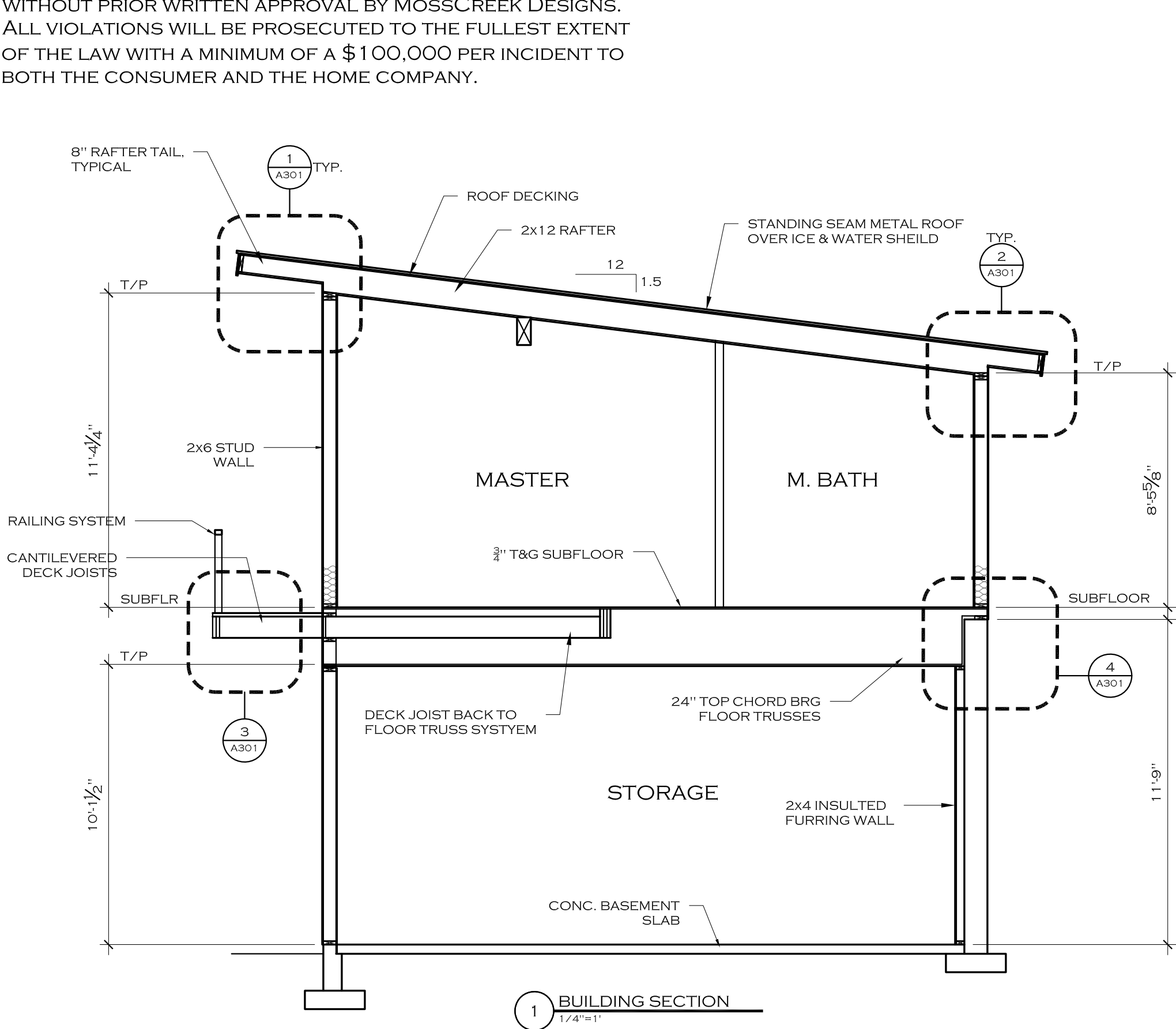
Scale 1/4"=1'-0"

Title/No.

ELEVATIONS

A201

COPYRIGHT 2021 MOSSCREEK DESIGNS. THE USE OF THIS DOCUMENT AND THE HOME DESIGN HEREIN IS STRICTLY CONTROLLED BY US COPYRIGHT LAW. THIS DOCUMENT MAY NOT BE COPIED NOR MAY THE HOME DESIGN BE COPIED, EMULATED, OR REFERENCED BY EITHER AN INDIVIDUAL OR A HOME COMPANY WITHOUT PRIOR WRITTEN APPROVAL BY MOSSCREEK DESIGNS. ALL VIOLATIONS WILL BE PROSECUTED TO THE FULLEST EXTENT OF THE LAW WITH A MINIMUM OF A \$100,000 PER INCIDENT TO BOTH THE CONSUMER AND THE HOME COMPANY.

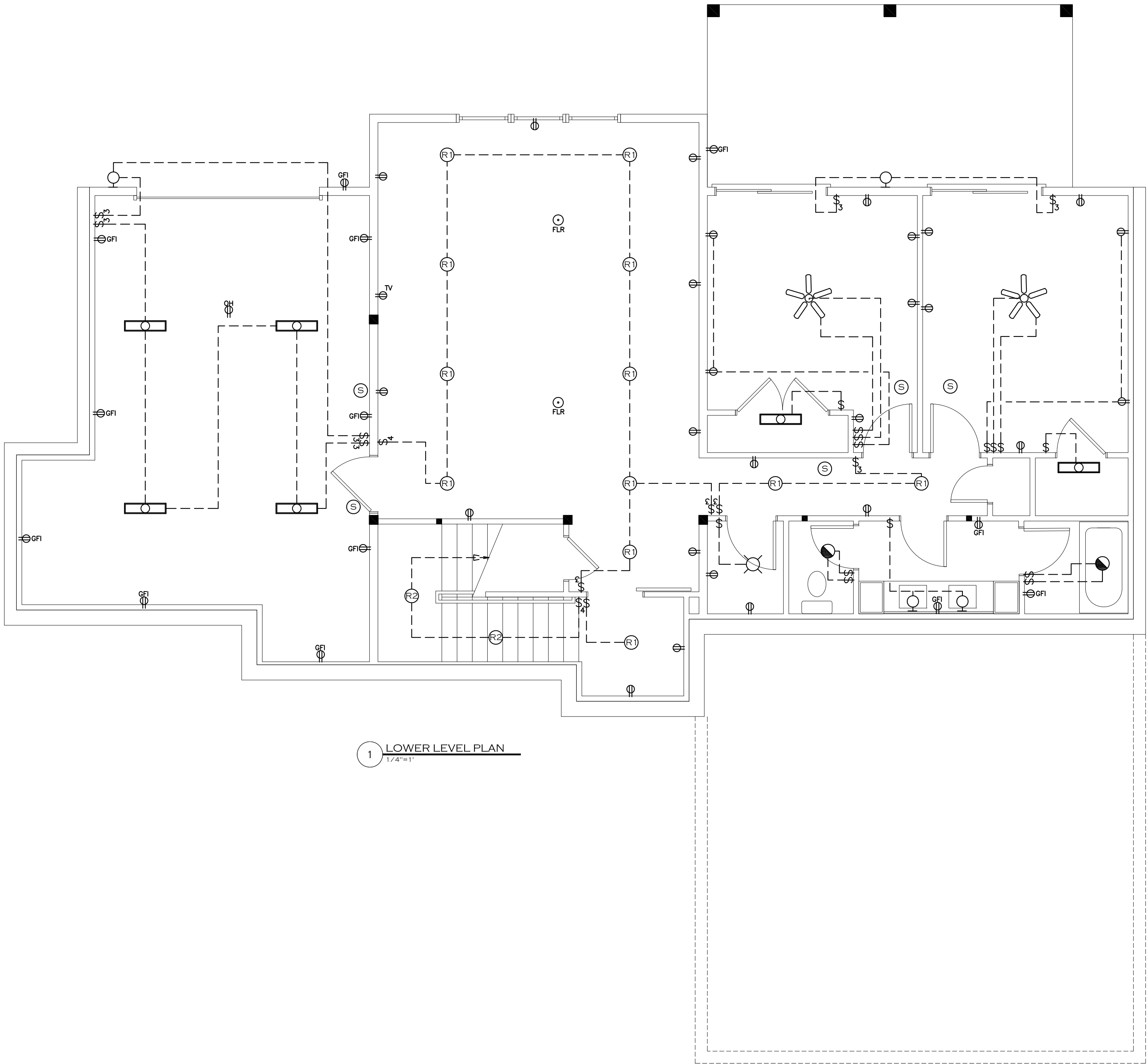


THE ARCHER HOME BY MOSSCREEK



SECTION DETAILS

COPYRIGHT 2021 MossCreek Designs. THE USE OF THIS DOCUMENT AND THE HOME DESIGN HEREIN IS STRICTLY CONTROLLED BY US COPYRIGHT LAW. THIS DOCUMENT MAY NOT BE COPIED NOR MAY THE HOME DESIGN BE COPIED, EMULATED, OR REFERENCED BY EITHER AN INDIVIDUAL OR A HOME COMPANY WITHOUT PRIOR WRITTEN APPROVAL BY MossCreek Designs. ALL VIOLATIONS WILL BE PROSECUTED TO THE FULLEST EXTENT OF THE LAW WITH A MINIMUM OF A \$100,000 PER INCIDENT TO BOTH THE CONSUMER AND THE HOME COMPANY.



ELECTRICAL LEGEND	
	UNDER CABINET FIXTURE
	DIRECTIONAL SPOTS
	FLAT CLG RECESSED CAN LIGHT
	SLOPED CLG RECESSED CAN LIGHT
	EXHAUST / CAN LIGHT
	INTERIOR / OUTDOOR WALL MOUNTED FIXTURE
	CEILING MOUNTED
	MONO POINT MR16
	PENDENT LIGHT
	EXTERIOR FLOOD LIGHT
	FLUORESCENT OR STRIP LED
	VENT / LIGHT
	LIGHT / FAN COMBO
	220 OUTLET
	110 OUTLET
	GROUND FAULT INTERRUPTER
	GROUND FAULT INTERRUPTER W/ COVER
	FLOOR MOUNTED RECEPTICAL
	SINGLE POLE SWITCH
	3-WAY SWITCH
	4-WAY SWITCH
	TELEVISION CONECTION
	SMOKE DETECTOR
	SPECIAL CONNECTION

SMOKE & CO DETECTORSTO BE NFPA APPROVED INTERCONNECTED W/ BATTERY BACKUP

NOTE:

THIS DRAWING IS CONCEPTUAL AND TO BE USED FOR PLANNING THE ELECTRICAL LIGHTING FIXTURE TYPE AND OUTLET LOCATIONS.

WHOLE HOUSE LIGHTING CONTROLS TO BE DESIGNED BY OTHERS (LUTRON OR EQUAL) AND ARE NOT IN THE SCOPE OF THIS DRAWING.

ELECTRICAL CONTRACTOR SHALL INSTALL OUTLETS, FIXTURES, WIRING, AND EQUIPMENT PER NATIONAL ELECTRIC CODE.

ELECTRICAL CONTRACTOR SHALL COORDINATE ALL LIGHTING FIXTURE TYPES AND LOCATIONS WITH THE OWNER, KITCHEN DESIGNER, AND INTERIOR DESIGNER.

SWITCHING AND SWITCH LOCATIONS SHALL BE VERIFIED DURING ELECTRICAL ROUGH-IN WALK-THROUGH WITH OWNER.

SECURITY, AUDIO VISUAL, COMMUNICATION, AND STRUCTURED WIRING ARE NOT IN THE SCOPE OF THIS DRAWING. CONTRACTOR SHALL VERIFY WITH OWNER, ELECTRICAL CONTRACTOR AND A/V CONTRACTORS THE SCOPE OF THAT WORK TO BE DONE.

LOWER LEVEL ELECTRICAL TO BE ROUGHED IN PER CODE AND AS PER OWNER REQUEST AND REQUIREMENTS FOR MECHANICAL EQUIPMENT.

Revision no.

Project No.

Cad File HBM108-00E100.dwg

Drawn

Checked AH

Date 11/12/2021

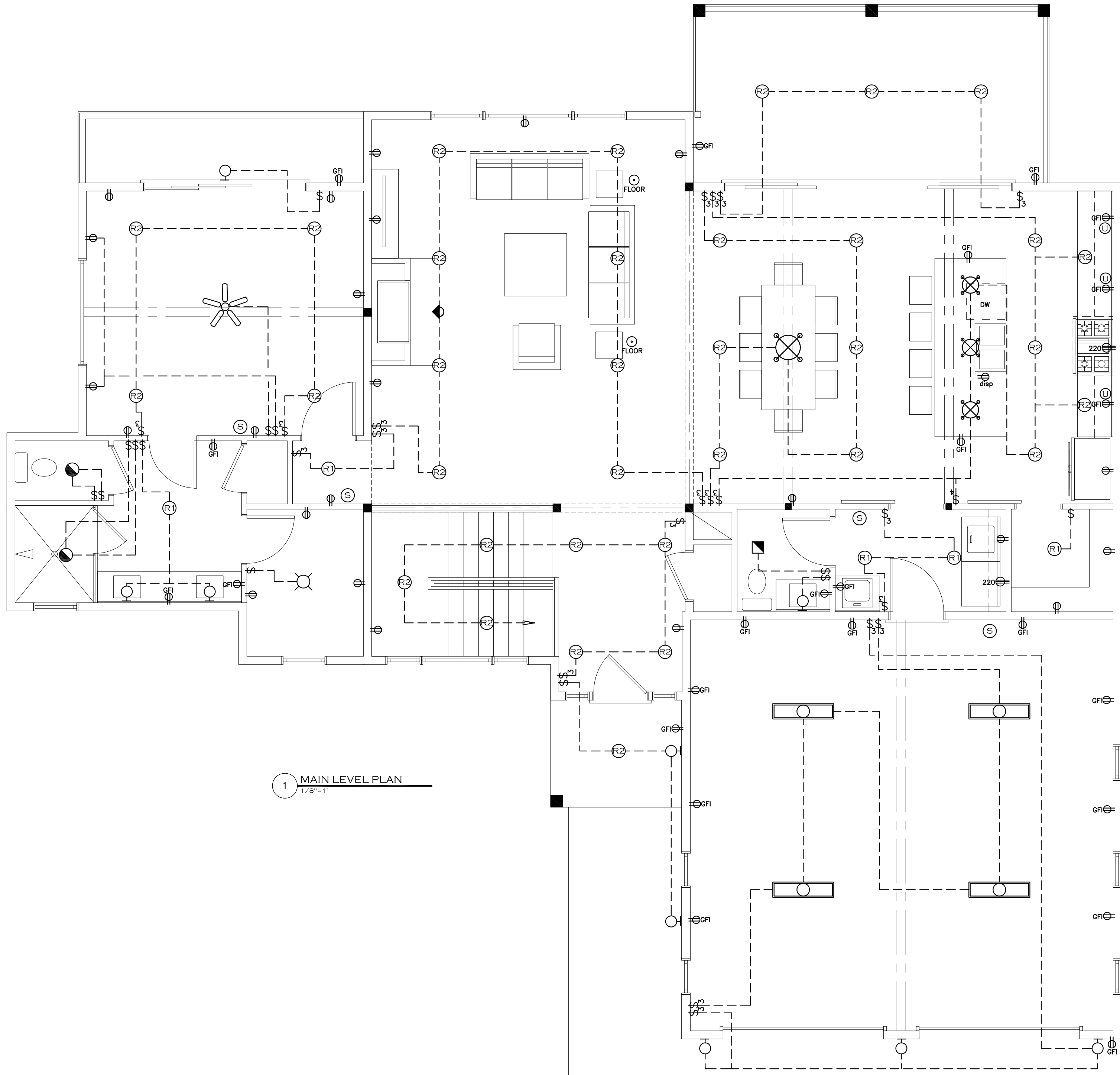
Scale 1/4"=1'-0"

Title/No.

LOWER LEVEL
LIGHTING &
OUTLETS PLAN

E 100

COPYRIGHT 2021 MossCreek Designs. THE USE OF THIS DOCUMENT AND THE HOME DESIGN HEREIN IS STRICTLY CONTROLLED BY US COPYRIGHT LAW. THIS DOCUMENT MAY NOT BE COPIED NOR MAY THE HOME DESIGN BE COPIED, EMULATED, OR REFERENCED BY EITHER AN INDIVIDUAL OR A HOME COMPANY WITHOUT PRIOR WRITTEN APPROVAL BY MossCreek Designs. ALL VIOLATIONS WILL BE PROSECUTED TO THE FULLEST EXTENT OF THE LAW WITH A MINIMUM OF A \$100,000 PER INCIDENT TO BOTH THE CONSUMER AND THE HOME COMPANY.



ELECTRICAL LEGEND	
	UNDER CABINET FIXTURE
	DIRECTIONAL SPOTS
	FLAT CLG RECESSED CAN LIGHT
	SLOPED CLG RECESSED CAN LIGHT
	EXHAUST / CAN LIGHT
	INTERIOR / OUTDOOR WALL MOUNTED FIXTURE
	CEILING MOUNTED
	MONO POINT MR16
	PENDENT LIGHT
	EXTERIOR FLOOD LIGHT
	FLUORESCENT OR STRIP LED
	VENT / LIGHT
	LIGHT / FAN COMBO
	220 OUTLET
	110 OUTLET
	GROUND FAULT INTERRUPTER
	GROUND FAULT INTERRUPTER W/ COVER
	FLOOR MOUNTED RECEPTICAL
	SINGLE POLE SWITCH
	3-WAY SWITCH
	4-WAY SWITCH
	TELEVISION CONECTION
	SMOKE DETECTOR
	SPECIAL CONNECTION

Ⓢ SMOKE & CO. DETECTORSTO BE NFPA APPROVED INTERCONNECTED W/ BATTERY BACKUP

NOTE:

THIS DRAWING IS CONCEPTUAL AND TO BE USED FOR PLANNING THE ELECTRICAL LIGHTING FIXTURE TYPE AND OUTLET LOCATIONS.

WHOLE HOUSE LIGHTING CONTROLS TO BE DESIGNED BY OTHERS (LUTRON OR EQUAL) AND ARE NOT IN THE SCOPE OF THIS DRAWING.

ELECTRICAL CONTRACTOR SHALL INSTALL OUTLETS, FIXTURES, WIRING, AND EQUIPMENT PER NATIONAL ELECTRIC CODE.

ELECTRICAL CONTRACTOR SHALL COORDINATE ALL LIGHTING FIXTURE TYPES AND LOCATIONS WITH THE OWNER, KITCHEN DESIGNER, AND INTERIOR DESIGNER.

SWITCHING AND SWITCH LOCATIONS SHALL BE VERIFIED DURING ELECTRICAL ROUGH-IN WALK-THROUGH WITH OWNER.

SECURITY, AUDIO VISUAL, COMMUNICATION, AND STRUCTURED WIRING ARE NOT IN THE SCOPE OF THIS DRAWING. CONTRACTOR SHALL VERIFY WITH OWNER, ELECTRICAL CONTRACTOR AND A/V CONTRACTORS THE SCOPE OF THAT WORK TO BE DONE.

LOWER LEVEL ELECTRICAL TO BE ROUGHED IN PER CODE AND AS PER OWNER REQUEST AND REQUIREMENTS FOR MECHANICAL EQUIPMENT.

MossCreek

THE ART AND CRAFT OF
RUSTIC HOME DESIGN

MossCreek
127 W. JACKSON AVE.
SUITE 202
KNOXVILLE, TN 37902
TEL: (865) 637-2166
FAX: (865) 637-2188
WWW.MOSSCREEK.NET

A DIVISION OF DESIGNERS ALLIANCE, INC.

THE ARCHER
HOME BY MOSSCREEK

Revision no.

Project No.

Cad File HBM108-00E101.dwg

Drawn

Checked AH

Date 11/12/2021

Scale 1/4"=1'-0"

Title/No.

MAIN LEVEL
LIGHTING &
OUTLETS PLAN

E101