

The Contempranillo

BY LIVING STONE CONSTRUCTION



The Contempranillo is from our popular Contemporary line of plans. This home is perfect for families of all ages because it has main level living through its Universal Design, and also low maintenance finishes, which offers flexibility for all ages and seasons of life. It features approximately 2,157 heated square feet, 2 bedrooms, 2 bathrooms, walk-in pantry, and a large great room space with glass that opens to wrap around porches, all on the main level. This plan works well with most mountain lots and is perfectly designed for those sloping lots with a knoll. It can be built over an optional lower level which will allow 1,503 hsf of overflow space below including 2 additional bedrooms, 2 additional baths, recreational space, outdoor living and patio space if desired. This home has dramatic roof and ceiling designs, as well as oversized windows and doors that create a wall of glass out the back to capture the “view”. Like all Living Stone homes, this model is certified Energy Star and NC Greenbuilt, has a passive solar design, and smart floor plan.

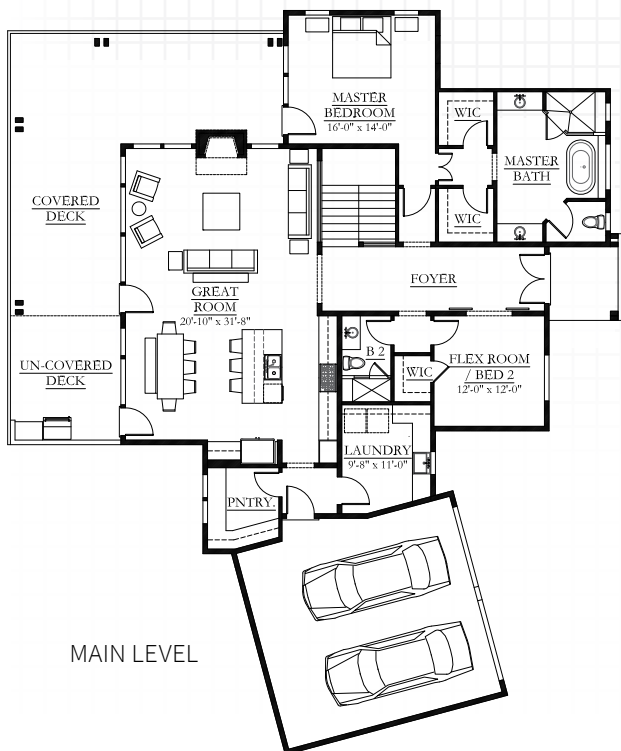
*Choose from one of
Living Stone's stock plans
and let us customize
them for you at a fraction
of an architect's costs.*

Specifications

- Contemporary style home built by Living Stone Construction, Inc.
- 2,157 hsf with 2 bedrooms, 2 baths on main level
- 1,503 hsf with 2 bedrooms, 2 baths on lower level (*optional*)
- Energy Star rated home, utility discounts - eligible
- NC Greenbuilt, Superior IAQ (*Indoor Air Quality*)
- Passive Solar Design
- Attached 2 car garage on main level
- Large covered deck off the great room
- Uncovered deck off the dining room
- Spray foam insulation in the roof
- High efficiency heat pump, or dual fuel furnace
- High efficiency heat pump water heater

Exterior Features

- Main level, zero clearance entry and showers
- Low maintenance finishes such as natural stone and stucco
- Hard-panel and/or cedar siding
- Vinyl windows with SDL's and low-E glass
- Standing seam metal roof
- Covered entryway, art gallery foyer, and wrap around porch
- Oversized windows and doors
- Sleek cable railing



Interior Features

- 9' ceilings (*or greater*) with unlimited vaulting potential
- Large open kitchen with oversized island and seating
- Space for entertaining with open dining, great room, and fireplace
- Universal design (*for Aging-in-Place*)
- Granite countertops
- Stainless steel appliances
- Large master bath with soaking tub, separate vanities, and His & Hers closets
- Master bedroom access to porch
- Large laundry off the garage
- 3" oak wood floors and tile throughout
- Kohler plumbing fixtures
- Customized selections on each home

SQUARE FOOT SUMMARY:

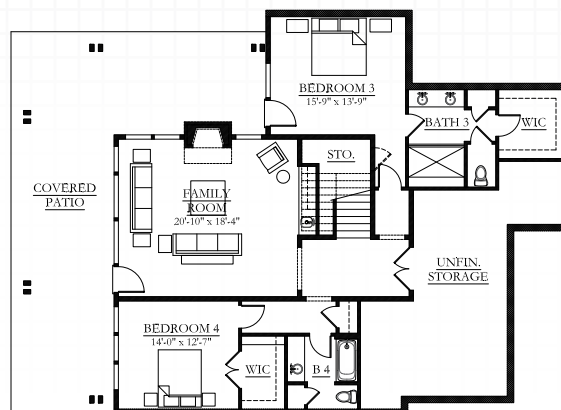
AREA

Main Level: 2,157 hsf
 Lower Level *optional*: 1,503 hsf

Total Heated: up to 3,657 hsf

DIMENSIONS

Width: ----
 Depth: ----
 Ceiling Lower Level: ----
 Ceiling Main Level: 9'



These features
are part of every
Living Stone
built home:



Finishes Fully
customizable



Green and
Energy Efficient



Low
Maintenance



Universal
design



Lots of
storage

Call to learn more
about how this
floor plan may be
customized to fit
your needs!

855.720.2435