

# The Norris

## BY LIVING STONE CONSTRUCTION



**The Norris** is a universally designed home that maximizes your mountain views, boasts a real old-world feel, and is incredibly energy efficient. This floor plan works well, on a flat or sloping lot, for families of all sizes and ages. With a large master suite on the main level, large entertaining spaces, and optional 3rd bay garage, it is ideal for the couple that is looking to slow down their professional life and begin enjoying mountain living. Since it has overflow bedrooms, bathrooms, and recreational space on the upper level, family and friends can stay as long (or as little) as you like! This 4 bedroom can easily be converted into 5 bedrooms by finishing the bonus room or you could convert the dining room into a home office. Perhaps the best feature of this home is its orientation to the mountain views from the breakfast room and porch. This plan allows for 2,352 heated square feet on the main level and an additional 1,163 of hsf on the upper level. The foundation can be placed over a crawl space, unfinished basement, or finished lower level depending on your needs.

*Choose from one of  
Living Stone's stock plans  
and let us customize  
them for you at a fraction  
of an architect's costs.*



LivingStoneConstruction.com • information@LivingStoneConstruction.com

## Specifications

- Old World style home built by Living Stone Construction, Inc.
- 3,515 heated square foot home (*including finished upper level*)
- 4 bedrooms, 4½ baths
- Energy Star Certified Home, utility discounts - eligible
- NC Greenbuilt certified for high IAQ (*indoor air quality*)
- Main Level 2 Car Garage (optional 3rd bay)
- Spacious Great Room (*with optional beam/tray ceilings*)
- Large master suite
- High efficiency heat pump, or dual fuel furnace
- High efficiency heat pump water heater
- Views maximized by windows across the back of the home
- Large covered porch (*optional screen*)

## Exterior Features

- Natural stone veneer, columns and pebble dash stucco
- Aluminum clad windows with SDLs, Low-E glass
- Natural stone, hardi-plank siding, and other low maintenance exterior finishes
- Architectural shingles and metal roof accents
- Covered front porch and ample back porch and/or patio
- 2x6 exterior walls for maximum insulation
- Custom milled porch and deck railings

## Interior Features

- Quaint breakfast (*4 seasons*) room
- Large open kitchen with island
- Butlers pantry
- Gas fireplace with natural stone surround
- Universal design (*Aging-in-Place living*)
- Granite countertops
- Stainless steel appliances
- Ample size walk-in master closet (*California style*)
- 3" Oak Hardwood flooring throughout
- Kohler Plumbing Fixtures
- Foam insulation in the roof for climatized storage
- Lower Level option (*not priced*)

These features  
are part of every  
Living Stone  
built home:



Finishes Fully  
customizable



Green and  
Energy Efficient



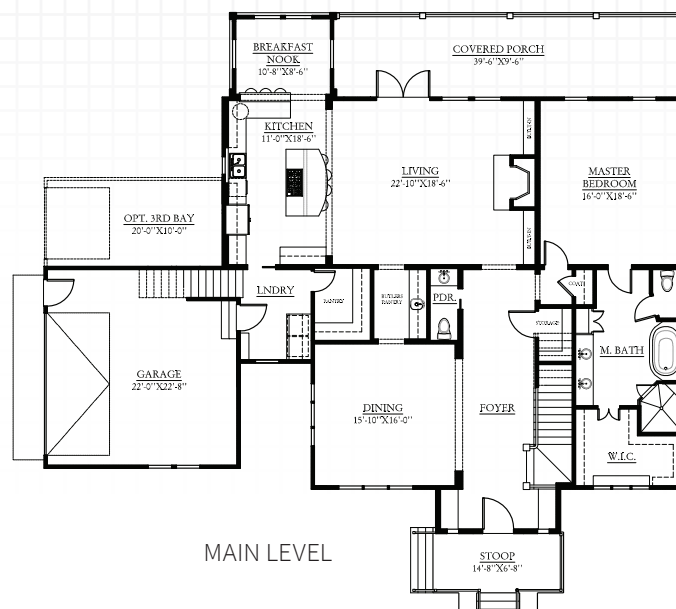
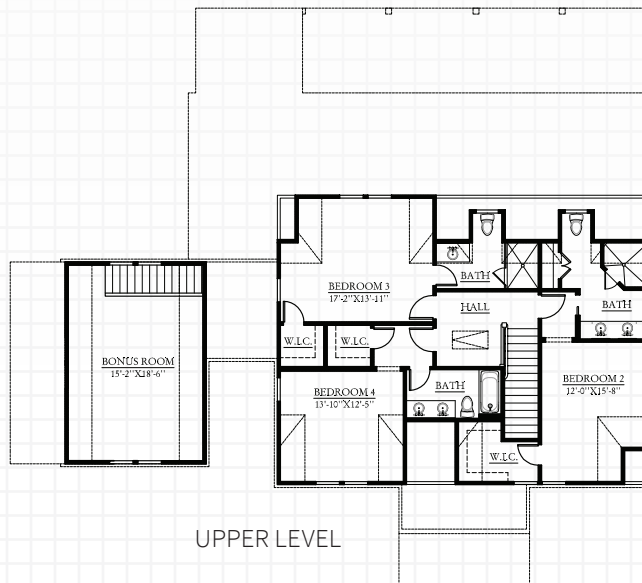
Low  
Maintenance



Universal  
design



Lots of  
storage



### SQUARE FOOT SUMMARY:

#### AREA

Main Level:	2,352 hsf
Upper Level:	1,163 hsf
Total Heated:	2,577 hsf

#### DIMENSIONS

Width:	72"
Depth:	67'8"
Ceiling Main Level:	10'
Ceiling Upper Level:	10'

Call to learn more  
about how this  
floor plan may be  
customized to fit  
***your*** needs!

**855.720.2435**