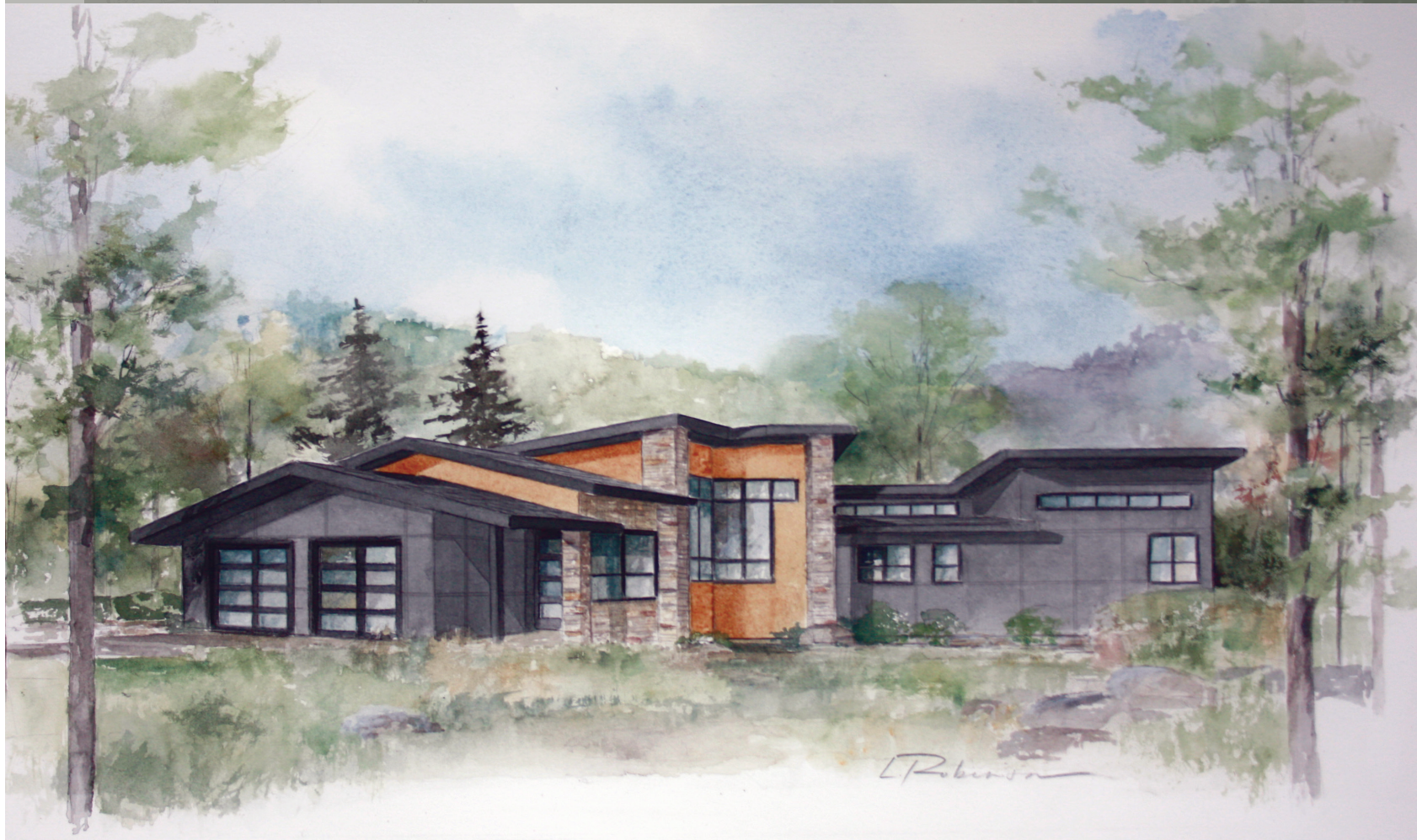


# The Rocky Ridge

## BY LIVING STONE CONSTRUCTION



**The Rocky Ridge** is from our popular Contemporary line of plans. This home is perfect for families of all ages. It offers main level living through its Universal Design, low maintenance finishes, and flexibility for all ages and seasons of life. It features approximately 2,746 heated square feet, 3 bedrooms, 2½ baths, and a unique art gallery entry. An open layout maximizes expansive views with a large, wrap-around deck, all on one level. This plan works well with most mountain lots and is perfectly designed for those sloping lots with a knoll. It can be built over a lower level which will allow overflow space below, including additional bedrooms, recreational space, outdoor living and patio space if desired. This home has dramatic angular vaulted ceilings, oversized windows, and large full-size slider doors that create a wall of glass to open out the back. Like all Living Stone homes, this model is certified Energy Star and NC Greenbuilt, has a passive solar design, and smart floor plan.

Choose from one of  
Living Stone's stock plans  
and let us customize  
them for you at a fraction  
of an architect's costs.



LivingStoneConstruction.com • [information@LivingStoneConstruction.com](mailto:information@LivingStoneConstruction.com)

## Specifications

- 2,746 heated square foot home, on main level
- 3 bedrooms, 2½ baths
- Energy Star Rated Home, utility discounts - eligible
- NC Greenbuilt certified for Superior IAQ (*Indoor Air Quality*), optional solar
- Contemporary butterfly roof
- Passive solar design
- Attached 2 car garage on main level
- Unique art gallery entry
- Wrap-around deck
- Master suite home office and spa style wet room
- Large walk-in closet
- Dramatic stone fireplace with built-ins
- High efficiency heat pump, or dual fuel furnace
- High efficiency heat pump water heater

## Exterior Features

- Main level, zero clearance entry
- Low maintenance finishes such as natural stone and stucco
- Hardi-Panel and/or cedar siding
- Aluminum clad windows with SDLs, Low-E glass
- Standing seam metal roof
- Covered entryway, entry gallery, and expansive deck
- Oversized windows and doors
- Sleek cable railing

## Interior Features

- 9' ceilings (or greater) with unlimited angular vaulting potential
- Large open kitchen with oversized island and seating
- Open dining, great room, and fireplace for entertaining
- Universal design (*Aging-in-Place living*)
- Granite countertops
- Stainless steel appliances
- Large master suite to include home office and wet room
- Oversized walk-in closet
- Large laundry room with cabinetry
- 3" oak hardwood flooring, tile, and stone floors throughout
- Kohler plumbing fixtures
- Foam roof insulation
- Customized selections on each home



### HEATED/FINISHED SQUARE FOOT SUMMARY:

Total: 2,746 hsf

These features  
are part of every  
Living Stone  
built home:



Finishes Fully  
customizable



Green and  
Energy Efficient



Low  
Maintenance



Universal  
design



Lots of  
storage

Call to learn more  
about how this  
floor plan may be  
customized to fit  
**your** needs!

**855.720.2435**