

The Skylar

BY LIVING STONE CONSTRUCTION



The Skylar is a universally designed home that not only boasts a quaint craftsman architectural feel, but also incredibly energy efficient construction. This floor plan works well for families of all size and ages. Since it has three bedrooms with two full baths on the main level, it works great for families with younger children, but since it has a bonus room upstairs, it also works well for the next generation to accommodate guests or a home office. This 4 bedroom, 3 bath house has 1,866 heated square feet on the main level with a bonus room upstairs expanding an additional 265 hsf. The foundation can be placed over a crawl, unfinished basement, or finished lower level depending on your needs.

Choose from one of
Living Stone's stock plans
and let us customize
them for you at a fraction
of an architect's costs.

Specifications

- Craftsman home built by Living Stone Construction, Inc.
- 2,131 heated square foot home
- 4 bedrooms, 3 full baths
- Energy Star Rated Home, utility discounts - eligible
- Attached 2 car garage with area for workshop
- Natural gas and all under ground utilities
- Master suite access to deck
- High efficiency heat pump
- Gas water heater
- Gas direct-vent fireplace

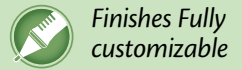
Exterior Features

- Natural stone veneer, columns and flagstone porch
- Premium Vinyl windows with SDLs, Low-E glass
- Hardi-plank Siding, cedar brackets
- Low maintenance exterior finishes
- Architectural shingles and metal roof accents
- Large covered front porch and ample back deck
- Extra-wide front door
- Custom milled porch and deck railings

Interior Features

- 9' ceilings throughout main level
- Vaulted ceilings in great room and master suite
- Large open kitchen with bar and keeping room
- Universal design (*Aging-in-Place living*)
- Granite countertops
- Stainless steel appliances
- Large walk-in master closet (*california style*) with direct access to laundry
- Large laundry with built-ins
- 2" oak hardwood flooring and slate tile floors throughout main level
- Kohler Plumbing Fixtures
- Foam insulation, Large attic rooms for climatized storage
- Upstairs bonus bedroom with carpet and walk-in closet and bath
- Customized selections on each home

These features are part of every Living Stone built home:



Finishes Fully customizable



Green and Energy Efficient



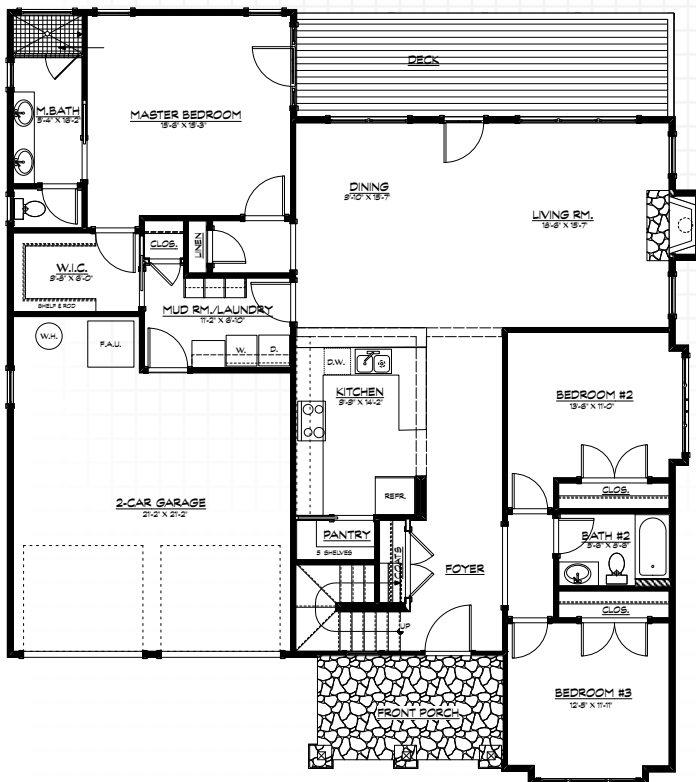
Low Maintenance



Universal design



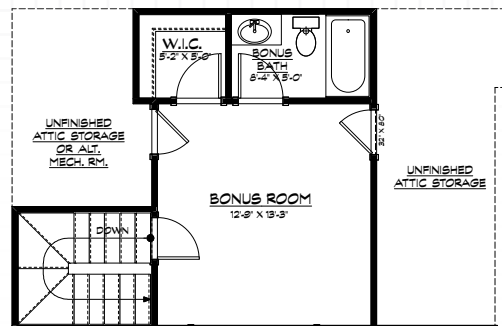
Lots of storage



MAIN LEVEL

HEATED/FINISHED SQUARE FOOT SUMMARY:

Main Level:	1,866 hsf
Upper Level:	265 hsf
Total Heated:	2,131 hsf



UPPER LEVEL

Call to learn more about how this floor plan may be customized to fit **your** needs!

855.720.2435