

# The Sunset

BY LIVING STONE CONSTRUCTION



**The Sunset** is a universally designed home that not only boasts a quaint craftsman architectural feel, but also incredibly energy efficient construction. This compact floor plan works well for a starter home, someone looking to downsize, or for a mountain getaway. It is designed to take advantage of the naturally sloping lot (above the road or below). This 3 bedroom, 2 1/2 bath home has 1,982 heated square feet with no wasted space. This plan can be adapted to fit your needs, your lot, or your wallet. Enjoy your view of the sunset in this home designed to maximize your views and your budget.

**Choose from one of Living Stone's stock plans and let us customize them for you at a fraction of an architect's costs.**



## Specifications

- Craftsman Home Built by Living Stone Construction, Inc.
- 1,982 heated square foot home (including finished lower level)
- 3 bedroom, 2 1/2 bath
- Energy Star Certified Home, Utility discounts - eligible
- NC Greenbuilt certified for high IAQ (indoor air quality)
- Lower Level 2 Car Garage (located in basement)
- Master suite access to deck
- High efficiency heat pump, or dual fuel furnace (optional geothermal)
- High efficiency heat pump water heater
- Views maximized by glass sliders across the back of the home
- Large open decks and patio

## Interior Features

- 10' ceilings on both levels
- Vaulted ceilings in great room and master suite
- Large open kitchen with island
- Gas fireplace with natural stone surround
- Universal design (Aging-in-Place living)
- Granite countertops
- Stainless steel appliances
- Ample size walk-in master closet (California style)
- 3" Oak Hardwood flooring throughout
- Kohler Plumbing Fixtures
- Foam insulation in the roof for climatized storage

## Exterior Features

- Natural stone veneer, columns and pebble dash stucco
- Jeld-Wen Premium Vinyl windows with SDLs, Low-E glass
- Hardi-plank Siding, cedar brackets
- Natural and other low maintenance exterior finishes
- Architectural shingles and metal roof accents
- Large covered front porch and ample back deck and/or patio
- 2x6 Exterior walls for maximum insulation
- Tyvek house wrap and moisture barrier
- Window wrap on all windows
- Custom milled porch and deck railings

FINISHES FULLY  
CUSTOMIZABLE



GREEN AND  
ENERGY EFFICIENT



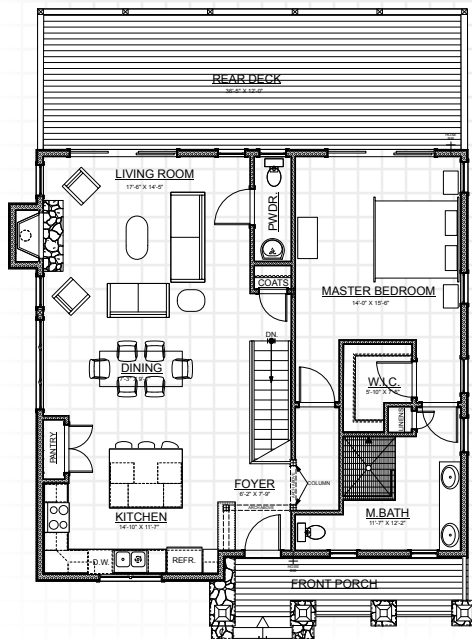
LOW MAINTENANCE



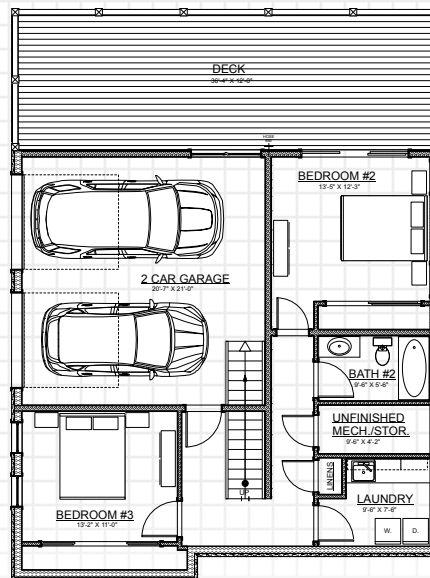
UNIVERSAL  
DESIGN



LOTS OF STORAGE



1ST FLOOR



2ND FLOOR

HEATED/FINISHED:	
Main level:	1,281 HSF
Lower level:	701 HSF
<b>Total:</b>	<b>1,982 HSF</b>